



[Go to Product page](#)

Datasheet for ABIN6741014
anti-REC8 antibody (AA 72-121)

1 Image

Overview

Quantity:	100 µL
Target:	REC8
Binding Specificity:	AA 72-121
Reactivity:	Human, Cow, Dog, Guinea Pig, Horse, Bat
Host:	Rabbit
Clonality:	Polyclonal
Conjugate:	This REC8 antibody is un-conjugated
Application:	Western Blotting (WB)

Product Details

Immunogen:	Synthetic peptide located between aa72-121 of human REC8 (O95072, NP_005123). Percent identity by BLAST analysis: Human, Chimpanzee, Gorilla, Gibbon, Monkey, Galago, Elephant, Panda, Dog, Bovine, Bat, Horse, Guinea pig (100%), Marmoset, Mouse, Rat, Pig, Opossum (92%). Type of Immunogen: Synthetic peptide
Isotype:	IgG
Specificity:	Human REC8
Predicted Reactivity:	Percent identity by BLAST analysis: Human, Dog, Bovine, Horse, Guinea pig (100%) Mouse, Rat, Pig (92%).
Purification:	Immunoaffinity purified

Target Details

Target:	REC8
Alternative Name:	REC8 (REC8 Products)
Background:	Name/Gene ID: REC8 Synonyms: REC8, Cohesion rec8p, HR21spB, REC8-like 1 (yeast), REC8-like 1, REC8L1, Rec8p, Cohesin Rec8p, REC8 homolog (yeast)
Gene ID:	9985
NCBI Accession:	NP_005123
UniProt:	O95072

Application Details

Application Notes:	Approved: WB (0.2 - 1 µg/mL) Usage: Western Blot: Suggested dilution at 1 µg/mL in 5 % skim milk / PBS buffer, and HRP conjugated anti-Rabbit IgG should be diluted in 1: 50,000 - 100,000 as second antibody. ELISA titer in peptide based assay: 1:1562500.
Comment:	Target Species of Antibody: Human
Restrictions:	For Research Use only

Handling

Format:	Lyophilized
Reconstitution:	Distilled water
Concentration:	Lot specific
Buffer:	Lyophilized from PBS with 2 % sucrose
Handling Advice:	Avoid repeat freeze-thaw cycles.
Storage:	4 °C,-20 °C
Storage Comment:	Long term: -20°C, the use of 50% glycerol is recommended if storing aliquots in -20°C for long term use (up to 1 year) Short term (less than 1 week): 4°C. Avoid freeze-thaw cycles.

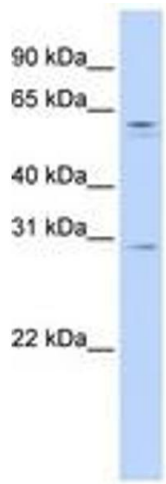


Image 1.