

Datasheet for ABIN6741015

anti-STING/TMEM173 antibody (AA 216-265)



[Go to Product page](#)

1 Image

Overview

Quantity:	100 µL
Target:	STING/TMEM173 (TMEM173)
Binding Specificity:	AA 216-265
Reactivity:	Human
Host:	Rabbit
Clonality:	Polyclonal
Conjugate:	This STING/TMEM173 antibody is un-conjugated
Application:	Western Blotting (WB)

Product Details

Immunogen:	Synthetic peptide located between aa216-265 of human TMEM173 (Q86WV6, NP_938023). Percent identity by BLAST analysis: Human (100%), Gorilla, Gibbon, Monkey (85%). Type of Immunogen: Synthetic peptide
Isotype:	IgG
Specificity:	Human TMEM173
Predicted Reactivity:	Percent identity by BLAST analysis: Human (100%).
Purification:	Immunoaffinity purified

Target Details

Target:	STING/TMEM173 (TMEM173)
---------	-------------------------

Target Details

Alternative Name:	TMEM173 / STING (TMEM173 Products)
Background:	Name/Gene ID: TMEM173 Synonyms: TMEM173, ERIS, MITA, HSTING, Transmembrane protein 173, HMITA, Mediator of IRF3 activation, MPYS, NET23, STING
Gene ID:	340061
NCBI Accession:	NP_938023
UniProt:	Q86WV6
Pathways:	Activation of Innate immune Response

Application Details

Application Notes:	Approved: WB (0.2 - 1 µg/mL) Usage: Western Blot: Suggested dilution at 1 µg/mL in 5 % skim milk / PBS buffer, and HRP conjugated anti-Rabbit IgG should be diluted in 1: 50,000 - 100,000 as second antibody. ELISA titer in peptide based assay: 1:62500.
Comment:	Target Species of Antibody: Human
Restrictions:	For Research Use only

Handling

Format:	Lyophilized
Reconstitution:	Distilled water
Concentration:	Lot specific
Buffer:	Lyophilized from PBS with 2 % sucrose
Handling Advice:	Avoid repeat freeze-thaw cycles.
Storage:	4 °C,-20 °C
Storage Comment:	Long term: -20°C, the use of 50% glycerol is recommended if storing aliquots in -20°C for long term use (up to 1 year) Short term (less than 1 week): 4°C. Avoid freeze-thaw cycles.

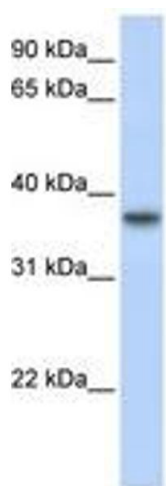


Image 1.