

Datasheet for ABIN6741018  
**anti-RNASE9 antibody (AA 36-85)**[Go to Product page](#)

## 1 Image

## Overview

Quantity:	100 µL
Target:	RNASE9
Binding Specificity:	AA 36-85
Reactivity:	Human
Host:	Rabbit
Clonality:	Polyclonal
Conjugate:	This RNASE9 antibody is un-conjugated
Application:	Western Blotting (WB)

## Product Details

Immunogen:	Synthetic peptide located between aa36-85 of human RNASE9 (P60153, NP_001001673). Percent identity by BLAST analysis: Human (100%), Chimpanzee, Gorilla, Orangutan, Gibbon, Monkey (92%), Baboon, Marmoset (85%).  Type of Immunogen: Synthetic peptide
Isotype:	IgG
Specificity:	Human RNASE9
Predicted Reactivity:	Percent identity by BLAST analysis: Human (100%) Chimpanzee, Gorilla, Orangutan, Monkey (92%) Baboon (85%).
Purification:	Immunoaffinity purified

## Target Details

Target:	RNASE9
Alternative Name:	RNASE9 ( <a href="#">RNASE9 Products</a> )
Background:	Name/Gene ID: RNASE9  Synonyms: RNASE9, H461, HEL128, Ribonuclease 9, Ribonuclear enzyme, Ribonuclease-like protein 9
Gene ID:	390443
NCBI Accession:	<a href="#">NP_001001673</a>
UniProt:	<a href="#">P60153</a>

## Application Details

Application Notes:	Approved: WB (0.2 - 1 µg/mL)  Usage: Western Blot: Suggested dilution at 1 µg/mL in 5 % skim milk / PBS buffer, and HRP conjugated anti-Rabbit IgG should be diluted in 1: 50,000 - 100,000 as second antibody. ELISA titer in peptide based assay: 1:62500.
Comment:	Target Species of Antibody: Human
Restrictions:	For Research Use only

## Handling

Format:	Lyophilized
Reconstitution:	Distilled water
Concentration:	Lot specific
Buffer:	Lyophilized from PBS with 2 % sucrose
Handling Advice:	Avoid repeat freeze-thaw cycles.
Storage:	4 °C,-20 °C
Storage Comment:	Long term: -20°C, the use of 50% glycerol is recommended if storing aliquots in -20°C for long term use (up to 1 year)  Short term (less than 1 week): 4°C. Avoid freeze-thaw cycles.

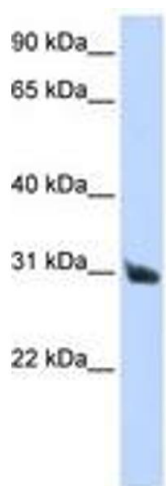


Image 1.