

Datasheet for ABIN6741021 anti-PDHB antibody (AA 72-121)



[Go to Product page](#)

1 Image

Overview

Quantity:	100 µL
Target:	PDHB
Binding Specificity:	AA 72-121
Reactivity:	Human, Rat, Mouse, Cow, Dog, Guinea Pig, Horse, Rabbit, Bat, Chicken, Monkey, Pig, Saccharomyces cerevisiae
Host:	Rabbit
Clonality:	Polyclonal
Conjugate:	This PDHB antibody is un-conjugated
Application:	Western Blotting (WB)

Product Details

Immunogen:	Synthetic peptide located between aa72-121 of human PDHB (P11177, NP_000916). Percent identity by BLAST analysis: Human, Chimpanzee, Gorilla, Orangutan, Gibbon, Monkey, Galago, Mouse, Rat, Elephant, Panda, Dog, Bovine, Bat, Rabbit, Horse, Pig, Opossum, Guinea pig, Turkey, Chicken, Lizard, Catfish (100%), Zebra finch, Salmon, Smelt, Stickleback, Pike, Pufferfish, Zebrafish, Drosophila (92%), Xenopus, Beetle (85%). Type of Immunogen: Synthetic peptide
Isotype:	IgG
Specificity:	Human PDHB
Predicted Reactivity:	Percent identity by BLAST analysis: Human, Dog, Rabbit, Horse, Pig, Chicken (100%) Zebrafish

Product Details

(92%).

Purification: Immunoaffinity purified

Target Details

Target: PDHB

Alternative Name: PDHB ([PDHB Products](#))

Background: Name/Gene ID: PDHB

Synonyms: PDHB, PDHE1-B, PDHBD, PHE1B

Gene ID: 5162

NCBI Accession: [NP_000916](#)

UniProt: [P11177](#)

Pathways: [Warburg Effect](#)

Application Details

Application Notes: Approved: WB (0.2 - 1 µg/mL)

Usage: Western Blot: Suggested dilution at 1 µg/mL in 5 % skim milk / PBS buffer, and HRP conjugated anti-Rabbit IgG should be diluted in 1: 50,000 - 100,000 as second antibody. ELISA titer in peptide based assay: 1:312500.

Comment: Target Species of Antibody: Human

Restrictions: For Research Use only

Handling

Format: Lyophilized

Reconstitution: Distilled water

Concentration: Lot specific

Buffer: Lyophilized from PBS with 2 % sucrose

Handling Advice: Avoid repeat freeze-thaw cycles.

Storage: 4 °C,-20 °C

Handling

Storage Comment: Long term: -20°C, the use of 50% glycerol is recommended if storing aliquots in -20°C for long term use (up to 1 year)

Short term (less than 1 week): 4°C. Avoid freeze-thaw cycles.

Images

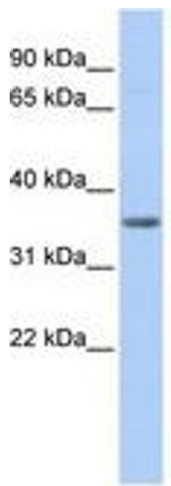


Image 1.