



Datasheet for ABIN6741022 anti-RPL3 antibody (AA 36-85)



[Go to Product page](#)

1 Image

Overview

Quantity:	100 µL
Target:	RPL3
Binding Specificity:	AA 36-85
Reactivity:	Human, Mouse, Rat, Cow, Dog, Guinea Pig, Horse, Rabbit, Monkey, Zebrafish (Danio rerio), Bat, Chicken, Hamster, Xenopus laevis
Host:	Rabbit
Clonality:	Polyclonal
Conjugate:	This RPL3 antibody is un-conjugated
Application:	Western Blotting (WB)

Product Details

Immunogen: Synthetic peptide located between aa36-85 of human RPL3 (P39023, NP_000958). Percent identity by BLAST analysis: Human, Chimpanzee, Orangutan, Monkey, Mouse, Rat, Hamster, Elephant, Panda, Dog, Bovine, Bat, Rabbit, Horse, Opossum, Guinea pig, Turkey, Chicken, Platypus, Lizard, Xenopus, Catfish, Salmon, Smelt, Stickleback, Zebrafish, Sea squirt (100%), Drosophila (92%), Nematode, Beetle (85%).

Type of Immunogen: Synthetic peptide

Isotype:	IgG
Specificity:	Human RPL3
Predicted Reactivity:	Percent identity by BLAST analysis: Human, Mouse, Dog, Bovine, Horse, Guinea pig, Chicken,

Product Details

Xenopus, Zebrafish (100%).

Purification: Immunoaffinity purified

Target Details

Target: RPL3

Alternative Name: RPL3 / L3 ([RPL3 Products](#))

Background: Name/Gene ID: RPL3

Synonyms: RPL3, 60S ribosomal protein L3, Hypothetical protein, L3, Ribosomal protein L3, TARBP-B, ASC-1

Gene ID: 6122

NCBI Accession: [NP_000958](#)

UniProt: [P39023](#)

Application Details

Application Notes: Approved: WB (0.2 - 1 µg/mL)

Usage: Western Blot: Suggested dilution at 1 µg/mL in 5 % skim milk / PBS buffer, and HRP conjugated anti-Rabbit IgG should be diluted in 1: 50,000 - 100,000 as second antibody. ELISA titer in peptide based assay: 1:312500.

Comment: Target Species of Antibody: Human

Restrictions: For Research Use only

Handling

Format: Lyophilized

Reconstitution: Distilled water

Concentration: Lot specific

Buffer: Lyophilized from PBS with 2 % sucrose

Handling Advice: Avoid repeat freeze-thaw cycles.

Storage: 4 °C, -20 °C

Handling

Storage Comment: Long term: -20°C, the use of 50% glycerol is recommended if storing aliquots in -20°C for long term use (up to 1 year)
Short term (less than 1 week): 4°C. Avoid freeze-thaw cycles.

Images

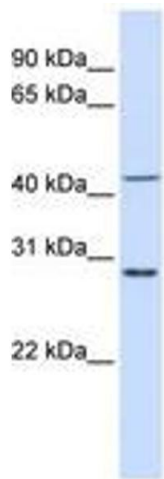


Image 1.