



Datasheet for ABIN6741025
anti-ATP5F1 antibody (AA 180-229)



[Go to Product page](#)

1 Image

Overview

Quantity:	100 µL
Target:	ATP5F1
Binding Specificity:	AA 180-229
Reactivity:	Human, Mouse, Cow, Dog, Guinea Pig, Rabbit, Monkey
Host:	Rabbit
Clonality:	Polyclonal
Conjugate:	This ATP5F1 antibody is un-conjugated
Application:	Western Blotting (WB)

Product Details

Immunogen:	Synthetic peptide located between aa180-229 of human ATP5F1 (P24539, NP_001679). Percent identity by BLAST analysis: Human, Chimpanzee, Gorilla, Gibbon, Marmoset, Mouse, Elephant, Panda, Dog, Bovine, Rabbit, Guinea pig (100%), Orangutan, Rat, Horse, Pig (92%), Monkey, Opossum, Platypus (85%). Type of Immunogen: Synthetic peptide
Isotype:	IgG
Specificity:	Human ATP5F1
Predicted Reactivity:	Percent identity by BLAST analysis: Human, Mouse, Dog (100%) Pig (92%).
Purification:	Immunoaffinity purified

Target Details

Target:	ATP5F1
Alternative Name:	ATP5F1 (ATP5F1 Products)
Background:	Name/Gene ID: ATP5F1 Subfamily: ATPase - F type Family: Transporter Synonyms: ATP5F1, ATPase subunit b, H ⁺ -ATP synthase subunit b, PIG47
Gene ID:	515
NCBI Accession:	NP_001679
UniProt:	P24539
Pathways:	Proton Transport , Ribonucleoside Biosynthetic Process

Application Details

Application Notes:	Approved: WB (0.2 - 1 µg/mL) Usage: Western Blot: Suggested dilution at 1 µg/mL in 5 % skim milk / PBS buffer, and HRP conjugated anti-Rabbit IgG should be diluted in 1: 50,000 - 100,000 as second antibody. ELISA titer in peptide based assay: 1:12500.
Comment:	Target Species of Antibody: Human
Restrictions:	For Research Use only

Handling

Format:	Lyophilized
Reconstitution:	Distilled water
Concentration:	Lot specific
Buffer:	Lyophilized from PBS with 2 % sucrose
Handling Advice:	Avoid repeat freeze-thaw cycles.
Storage:	4 °C,-20 °C
Storage Comment:	Long term: -20°C, the use of 50% glycerol is recommended if storing aliquots in -20°C for long term use (up to 1 year)

Handling

Short term (less than 1 week): 4°C. Avoid freeze-thaw cycles.

Images

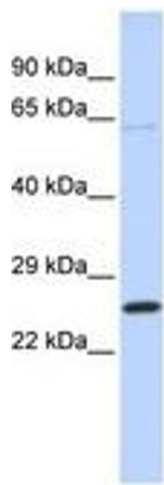


Image 1.