

Datasheet for ABIN6741028  
**anti-STK16 antibody (AA 216-265)**[Go to Product page](#)

## 1 Image

## Overview

Quantity:	100 µL
Target:	STK16
Binding Specificity:	AA 216-265
Reactivity:	Human, Dog, Goat, Rabbit, Bat, Monkey
Host:	Rabbit
Clonality:	Polyclonal
Conjugate:	This STK16 antibody is un-conjugated
Application:	Western Blotting (WB)

## Product Details

Immunogen:	Synthetic peptide located between aa216-265 of human STK16 (O75716). Percent identity by BLAST analysis: Human, Chimpanzee, Gorilla, Monkey, Marmoset, Goat, Panda, Dog, Bat, Rabbit (100%), Galago, Mouse, Rat, Elephant, Bovine, Horse, Pig, Opossum (92%), Guinea pig (85%).  Type of Immunogen: Synthetic peptide
Isotype:	IgG
Specificity:	Human STK16
Predicted Reactivity:	Percent identity by BLAST analysis: Human, Dog, Goat, Rabbit (100%) Mouse, Rat, Bovine, Pig (92%).
Purification:	Immunoaffinity purified

## Target Details

Target:	STK16
Alternative Name:	STK16 ( <a href="#">STK16 Products</a> )
Background:	Name/Gene ID: STK16 Subfamily: NAK Family: Protein Kinase  Synonyms: STK16, EDPK, HPSK, KRCT, PKL12, Protein kinase PKL12, TGF-beta-stimulated factor 1, Serine/threonine kinase 16, Tyrosine-protein kinase STK16, MPSK, MPSK1, TSF-1
Gene ID:	8576
UniProt:	<a href="#">O75716</a>

## Application Details

Application Notes:	Approved: WB (0.2 - 1 µg/mL)  Usage: Western Blot: Suggested dilution at 1 µg/mL in 5 % skim milk / PBS buffer, and HRP conjugated anti-Rabbit IgG should be diluted in 1: 50,000 - 100,000 as second antibody. ELISA titer in peptide based assay: 1:12500.
Comment:	Target Species of Antibody: Human
Restrictions:	For Research Use only

## Handling

Format:	Lyophilized
Reconstitution:	Distilled water
Concentration:	Lot specific
Buffer:	Lyophilized from PBS with 2 % sucrose
Handling Advice:	Avoid repeat freeze-thaw cycles.
Storage:	4 °C, -20 °C
Storage Comment:	Long term: -20°C, the use of 50% glycerol is recommended if storing aliquots in -20°C for long term use (up to 1 year) Short term (less than 1 week): 4°C. Avoid freeze-thaw cycles.

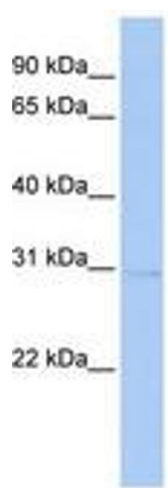


Image 1.