



[Go to Product page](#)

Datasheet for ABIN6741030
anti-EPSTI1 antibody (AA 108-157)

1 Image

Overview

Quantity:	100 µL
Target:	EPSTI1
Binding Specificity:	AA 108-157
Reactivity:	Human, Cow, Rabbit
Host:	Rabbit
Clonality:	Polyclonal
Conjugate:	This EPSTI1 antibody is un-conjugated
Application:	Western Blotting (WB)

Product Details

Immunogen:	Synthetic peptide located between aa108-157 of human EPSTI1 (Q96J88, NP_001002264). Percent identity by BLAST analysis: Human, Gorilla, Gibbon, Monkey, Galago (100%), Marmoset, Mouse, Rat, Elephant, Panda, Dog, Bat, Horse (92%), Bovine, Rabbit (85%). Type of Immunogen: Synthetic peptide
Isotype:	IgG
Specificity:	Human EPSTI1
Predicted Reactivity:	Percent identity by BLAST analysis: Mouse, Dog, Horse (92%) Bovine, Rabbit (85%).
Purification:	Immunoaffinity purified

Target Details

Target:	EPST11
Alternative Name:	EPST11 (EPST11 Products)
Background:	Name/Gene ID: EPST11 Synonyms: EPST11, BRES11
Gene ID:	94240
NCBI Accession:	NP_001002264
UniProt:	Q96J88

Application Details

Application Notes:	Approved: WB (0.2 - 1 µg/mL) Usage: Western Blot: Suggested dilution at 1 µg/mL in 5 % skim milk / PBS buffer, and HRP conjugated anti-Rabbit IgG should be diluted in 1: 50,000 - 100,000 as second antibody. ELISA titer in peptide based assay: 1:62500.
Comment:	Target Species of Antibody: Human
Restrictions:	For Research Use only

Handling

Format:	Lyophilized
Reconstitution:	Distilled water
Concentration:	Lot specific
Buffer:	Lyophilized from PBS with 2 % sucrose
Handling Advice:	Avoid repeat freeze-thaw cycles.
Storage:	4 °C, -20 °C
Storage Comment:	Long term: -20°C, the use of 50% glycerol is recommended if storing aliquots in -20°C for long term use (up to 1 year) Short term (less than 1 week): 4°C. Avoid freeze-thaw cycles.

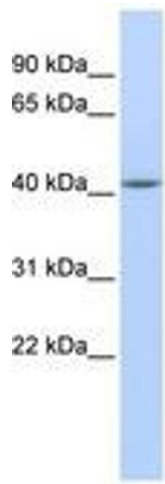


Image 1.