



[Go to Product page](#)

Datasheet for ABIN6741039
anti-GLYAT antibody (AA 71-120)

1 Image

Overview

Quantity:	100 µL
Target:	GLYAT
Binding Specificity:	AA 71-120
Reactivity:	Human, Mouse, Rabbit, Dog, Monkey
Host:	Rabbit
Clonality:	Polyclonal
Conjugate:	This GLYAT antibody is un-conjugated
Application:	Western Blotting (WB)

Product Details

Immunogen:	Synthetic peptide located between aa71-120 of human GLYAT (Q6IB77, NP_964011). Percent identity by BLAST analysis: Human, Chimpanzee, Gorilla, Orangutan, Gibbon, Monkey, Marmoset, Dog (100%), Galago, Rat, Bovine, Horse, Pig (92%), Mouse (85%), Hamster (84%). Type of Immunogen: Synthetic peptide
Isotype:	IgG
Specificity:	Human GLYAT
Predicted Reactivity:	Percent identity by BLAST analysis: Human, Dog (100%) Horse, Pig (92%) Bovine (85%) Mouse, Rat (84%).
Purification:	Immunoaffinity purified

Target Details

Target:	GLYAT
Alternative Name:	GLYAT (GLYAT Products)
Background:	Name/Gene ID: GLYAT Synonyms: GLYAT, AAc, ACGNAT, Aralkyl-CoA N-acyltransferase, Glycine N-benzoyltransferase, Glycine-N-acyltransferase, GAT, Glycine N-acyltransferase, HRP-1(CLP)
Gene ID:	10249
NCBI Accession:	NP_964011
UniProt:	Q6IB77

Application Details

Application Notes:	Approved: WB (0.2 - 1 µg/mL) Usage: Western Blot: Suggested dilution at 1 µg/mL in 5 % skim milk / PBS buffer, and HRP conjugated anti-Rabbit IgG should be diluted in 1: 50,000 - 100,000 as second antibody. ELISA titer in peptide based assay: 1:312500.
Comment:	Target Species of Antibody: Human
Restrictions:	For Research Use only

Handling

Format:	Lyophilized
Reconstitution:	Distilled water
Concentration:	Lot specific
Buffer:	Lyophilized from PBS with 2 % sucrose
Handling Advice:	Avoid repeat freeze-thaw cycles.
Storage:	4 °C,-20 °C
Storage Comment:	Long term: -20°C, the use of 50% glycerol is recommended if storing aliquots in -20°C for long term use (up to 1 year) Short term (less than 1 week): 4°C. Avoid freeze-thaw cycles.

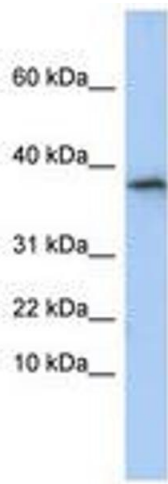


Image 1.