

Datasheet for ABIN6741041
anti-SULT1C4 antibody (AA 180-229)[Go to Product page](#)

1 Image

Overview

Quantity:	100 µL
Target:	SULT1C4
Binding Specificity:	AA 180-229
Reactivity:	Human, Dog, Horse
Host:	Rabbit
Clonality:	Polyclonal
Conjugate:	This SULT1C4 antibody is un-conjugated
Application:	Western Blotting (WB)

Product Details

Immunogen:	Synthetic peptide located between aa180-229 of human SULT1C4 (O75897, NP_006579). Percent identity by BLAST analysis: Human, Chimpanzee, Gorilla, Gibbon, Elephant (100%), Bovine (92%), Monkey, Dog, Horse (85%). Type of Immunogen: Synthetic peptide
Isotype:	IgG
Specificity:	Human SULT1C4
Predicted Reactivity:	Percent identity by BLAST analysis: Human (100%) Bovine (92%) Dog, Horse (85%).
Purification:	Immunoaffinity purified

Target Details

Target:	SULT1C4
Alternative Name:	SULT1C4 (SULT1C4 Products)
Background:	Name/Gene ID: SULT1C4 Synonyms: SULT1C4, HumSULTC2, ST1C2, Sulfotransferase 1C2, SULT1C#2, SULT1C1, Sulfotransferase 1C4, SULT1C, Sulfotransferase, ST1C1, ST1C4
Gene ID:	27233
NCBI Accession:	NP_006579
UniProt:	O75897

Application Details

Application Notes:	Approved: WB (0.2 - 1 µg/mL) Usage: Western Blot: Suggested dilution at 1 µg/mL in 5 % skim milk / PBS buffer, and HRP conjugated anti-Rabbit IgG should be diluted in 1: 50,000 - 100,000 as second antibody. ELISA titer in peptide based assay: 1:62500.
Comment:	Target Species of Antibody: Human
Restrictions:	For Research Use only

Handling

Format:	Lyophilized
Reconstitution:	Distilled water
Concentration:	Lot specific
Buffer:	Lyophilized from PBS with 2 % sucrose
Handling Advice:	Avoid repeat freeze-thaw cycles.
Storage:	4 °C,-20 °C
Storage Comment:	Long term: -20°C, the use of 50% glycerol is recommended if storing aliquots in -20°C for long term use (up to 1 year) Short term (less than 1 week): 4°C. Avoid freeze-thaw cycles.

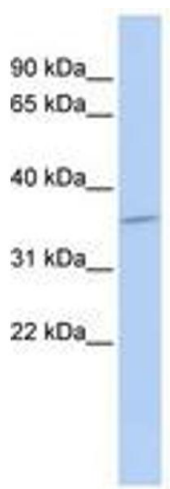


Image 1.