



[Go to Product page](#)

Datasheet for ABIN6741042
anti-INMT antibody (N-Term)

1 Image

Overview

Quantity:	100 µL
Target:	INMT
Binding Specificity:	N-Term
Reactivity:	Human, Rabbit, Monkey
Host:	Rabbit
Clonality:	Polyclonal
Conjugate:	This INMT antibody is un-conjugated
Application:	Western Blotting (WB)

Product Details

Immunogen:	Synthetic peptide from N-Terminus of human INMT (O95050, NP_006765). Percent identity by BLAST analysis: Human, Chimpanzee, Gorilla, Orangutan, Gibbon, Monkey (100%). Type of Immunogen: Synthetic peptide
Isotype:	IgG
Specificity:	Human INMT
Predicted Reactivity:	Percent identity by BLAST analysis: Human (100%).
Purification:	Immunoaffinity purified

Target Details

Target:	INMT
---------	------

Target Details

Alternative Name: [INMT \(INMT Products\)](#)

Background: Name/Gene ID: INMT

Synonyms: INMT, Amine N-methyltransferase, Arylamine N-methyltransferase, Indolamine N-methyltransferase, Thioether S-methyltransferase, Nicotine N-methyltransferase, TEMT

Gene ID: 11185

NCBI Accession: [NP_006765](#)

UniProt: [O95050](#)

Application Details

Application Notes: Approved: WB (0.2 - 1 µg/mL)

Usage: Western Blot: Suggested dilution at 1 µg/mL in 5 % skim milk / PBS buffer, and HRP conjugated anti-Rabbit IgG should be diluted in 1: 50,000 - 100,000 as second antibody. ELISA titer in peptide based assay: 1:312500.

Comment: Target Species of Antibody: Human

Restrictions: For Research Use only

Handling

Format: Lyophilized

Reconstitution: Distilled water

Concentration: Lot specific

Buffer: Lyophilized from PBS with 2 % sucrose

Handling Advice: Avoid repeat freeze-thaw cycles.

Storage: 4 °C, -20 °C

Storage Comment: Long term: -20°C, the use of 50% glycerol is recommended if storing aliquots in -20°C for long term use (up to 1 year)

Short term (less than 1 week): 4°C. Avoid freeze-thaw cycles.

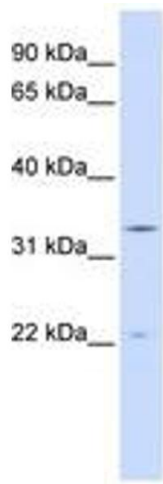


Image 1.