

Datasheet for ABIN6741044
anti-QPCT antibody (AA 216-265)[Go to Product page](#)

1 Image

Overview

Quantity:	100 µL
Target:	QPCT
Binding Specificity:	AA 216-265
Reactivity:	Human, Mouse, Rat, Cow, Sheep, Dog, Horse, Monkey, Pig
Host:	Rabbit
Clonality:	Polyclonal
Conjugate:	This QPCT antibody is un-conjugated
Application:	Western Blotting (WB)

Product Details

Immunogen:	Synthetic peptide located between aa216-265 of human QPCT (Q16769, NP_036545). Percent identity by BLAST analysis: Human, Gorilla, Gibbon, Monkey, Marmoset (100%), Rabbit, Guinea pig (92%), Sheep, Bovine, Bat, Pig (85%), Mouse, Rat (78%). Type of Immunogen: Synthetic peptide
Isotype:	IgG
Specificity:	Human QPCT
Predicted Reactivity:	Percent identity by BLAST analysis: Human (100%) Rabbit, Guinea pig (92%) Sheep, Bovine, Pig (85%).
Purification:	Immunoaffinity purified

Target Details

Target:	QPCT
Alternative Name:	QPCT / QC (QPCT Products)
Background:	Name/Gene ID: QPCT Subfamily: Metallopeptidase M28 Family: Protease Synonyms: QPCT, EC, Glutaminyl cyclase, Glutamyl cyclase, GCT, QC, SQC
Gene ID:	25797
NCBI Accession:	NP_036545
UniProt:	Q16769

Application Details

Application Notes:	Approved: WB (0.2 - 1 µg/mL) Usage: Western Blot: Suggested dilution at 1 µg/mL in 5 % skim milk / PBS buffer, and HRP conjugated anti-Rabbit IgG should be diluted in 1: 50,000 - 100,000 as second antibody. ELISA titer in peptide based assay: 1:62500.
Comment:	Target Species of Antibody: Human
Restrictions:	For Research Use only

Handling

Format:	Lyophilized
Reconstitution:	Distilled water
Concentration:	Lot specific
Buffer:	Lyophilized from PBS with 2 % sucrose
Handling Advice:	Avoid repeat freeze-thaw cycles.
Storage:	4 °C, -20 °C
Storage Comment:	Long term: -20°C, the use of 50% glycerol is recommended if storing aliquots in -20°C for long term use (up to 1 year) Short term (less than 1 week): 4°C. Avoid freeze-thaw cycles.

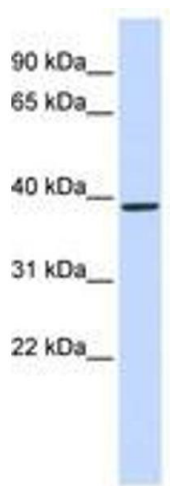


Image 1.