



[Go to Product page](#)

Datasheet for ABIN6741046
anti-CMAS antibody (AA 36-85)

1 Image

Overview

Quantity:	100 µL
Target:	CMAS
Binding Specificity:	AA 36-85
Reactivity:	Human, Mouse, Rat, Rabbit, Cow, Zebrafish (Danio rerio), Dog, Guinea Pig, Chicken, Monkey, Pig, Xenopus laevis
Host:	Rabbit
Clonality:	Polyclonal
Conjugate:	This CMAS antibody is un-conjugated
Application:	Western Blotting (WB)

Product Details

Immunogen:	Synthetic peptide located between aa36-85 of human CMAS (Q8NFW8, NP_061156). Percent identity by BLAST analysis: Human, Chimpanzee, Gorilla, Orangutan, Gibbon, Monkey, Galago, Mouse, Rat, Elephant, Panda, Dog, Bovine, Rabbit, Pig, Opossum, Guinea pig, Zebra finch, Chicken, Lizard, Xenopus, Trout, Salmon, Stickleback, Pufferfish, Zebrafish (100%), Horse, Catfish (92%), Sea squirt (91%). Type of Immunogen: Synthetic peptide
Isotype:	IgG
Specificity:	Human CMAS
Predicted Reactivity:	Percent identity by BLAST analysis: Human, Rat, Dog, Bovine, Rabbit, Chicken, Zebrafish (100%)

Product Details

Horse (92%).

Purification: Immunoaffinity purified

Target Details

Target: CMAS

Alternative Name: CMAS ([CMAS Products](#))

Background: Name/Gene ID: CMAS

Synonyms: CMAS, CMP-NeuNAc synthetase, CSS, CMP-Neu5Ac synthetase, CMP-NeuNAc synthase, CMP-sialic acid synthetase

Gene ID: 55907

NCBI Accession: [NP_061156](#)

UniProt: [Q8NFW8](#)

Application Details

Application Notes: Approved: WB (0.2 - 1 µg/mL)

Usage: Western Blot: Suggested dilution at 1 µg/mL in 5 % skim milk / PBS buffer, and HRP conjugated anti-Rabbit IgG should be diluted in 1: 50,000 - 100,000 as second antibody. ELISA titer in peptide based assay: 1:12500.

Comment: Target Species of Antibody: Human

Restrictions: For Research Use only

Handling

Format: Lyophilized

Reconstitution: Distilled water

Concentration: Lot specific

Buffer: Lyophilized from PBS with 2 % sucrose

Handling Advice: Avoid repeat freeze-thaw cycles.

Storage: 4 °C,-20 °C

Handling

Storage Comment: Long term: -20°C, the use of 50% glycerol is recommended if storing aliquots in -20°C for long term use (up to 1 year)
Short term (less than 1 week): 4°C. Avoid freeze-thaw cycles.

Images

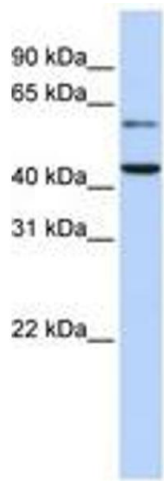


Image 1.