

Datasheet for ABIN6741054  
**anti-NEK3 antibody (AA 108-157)**[Go to Product page](#)

## 1 Image

## Overview

Quantity:	100 µL
Target:	NEK3
Binding Specificity:	AA 108-157
Reactivity:	Human, Cow, Guinea Pig, Horse, Monkey
Host:	Rabbit
Clonality:	Polyclonal
Conjugate:	This NEK3 antibody is un-conjugated
Application:	Western Blotting (WB)

## Product Details

Immunogen:	Synthetic peptide located between aa108-157 of human NEK3 (P51956, NP_002489). Percent identity by BLAST analysis: Human, Chimpanzee, Gorilla, Gibbon, Monkey, Galago, Elephant, Bovine, Horse, Opossum, Guinea pig (100%), Mouse, Rat, Bat, Pig, Turkey, Zebra finch, Chicken, Platypus, Xenopus (92%), Rice (90%), Lizard, Stickleback (85%), Grape (83%).  Type of Immunogen: Synthetic peptide
Isotype:	IgG
Specificity:	Human NEK3
Predicted Reactivity:	Percent identity by BLAST analysis: Human, Bovine, Horse, Guinea pig (100%) Mouse, Rat, Pig, Chicken, Xenopus (92%).
Purification:	Immunoaffinity purified

## Target Details

Target:	NEK3
Alternative Name:	NEK3 ( <a href="#">NEK3 Products</a> )
Background:	Name/Gene ID: NEK3 Subfamily: NEK Family: Protein Kinase  Synonyms: NEK3, HSPK 36, HSPK36, NIMA-related kinase 3, NimA-related protein kinase 3, Hydroxyalkyl-protein kinase, Phosphorylase B kinase kinase, Glycogen synthase A kinase
Gene ID:	4752
NCBI Accession:	<a href="#">NP_002489</a>
UniProt:	<a href="#">P51956</a>

## Application Details

Application Notes:	Approved: WB (0.2 - 1 µg/mL)  Usage: Western Blot: Suggested dilution at 1 µg/mL in 5 % skim milk / PBS buffer, and HRP conjugated anti-Rabbit IgG should be diluted in 1: 50,000 - 100,000 as second antibody. ELISA titer in peptide based assay: 1:1562500.
Comment:	Target Species of Antibody: Human
Restrictions:	For Research Use only

## Handling

Format:	Lyophilized
Reconstitution:	Distilled water
Concentration:	Lot specific
Buffer:	Lyophilized from PBS with 2 % sucrose
Handling Advice:	Avoid repeat freeze-thaw cycles.
Storage:	4 °C, -20 °C
Storage Comment:	Long term: -20°C, the use of 50% glycerol is recommended if storing aliquots in -20°C for long term use (up to 1 year)

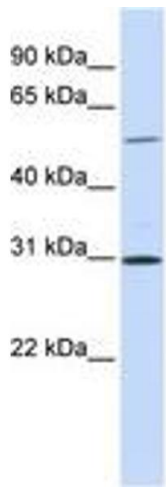
Handling

---

Short term (less than 1 week): 4°C. Avoid freeze-thaw cycles.

Images

---



**Image 1.**