



[Go to Product page](#)

Datasheet for ABIN6741062

## anti-Reticulon 1 antibody (AA 36-85)

### 1 Image

#### Overview

Quantity:	100 µL
Target:	Reticulon 1 (RTN1)
Binding Specificity:	AA 36-85
Reactivity:	Human, Mouse, Rat, Monkey, Cow, Chicken
Host:	Rabbit
Clonality:	Polyclonal
Conjugate:	This Reticulon 1 antibody is un-conjugated
Application:	Western Blotting (WB)

#### Product Details

Immunogen:	Synthetic peptide located between aa36-85 of human RTN1 (Q16799-2). Percent identity by BLAST analysis: Human, Chimpanzee, Gorilla, Gibbon, Monkey, Marmoset, Mouse, Rat, Elephant, Bovine, Opossum, Turkey, Zebra finch, Chicken, Platypus, Pufferfish (100%), Guinea pig, Xenopus (92%), Zebrafish (91%).  Type of Immunogen: Synthetic peptide
Isotype:	IgG
Specificity:	Human RTN1 / Reticulon 1
Predicted Reactivity:	Percent identity by BLAST analysis: Human, Mouse, Rat, Bovine, Chicken (100%) Guinea pig, Xenopus (92%) Zebrafish (91%).
Purification:	Immunoaffinity purified

## Target Details

---

Target:	Reticulon 1 (RTN1)
Alternative Name:	RTN1 / Reticulon 1 ( <a href="#">RTN1 Products</a> )
Background:	Name/Gene ID: RTN1 Family: Reticulon  Synonyms: RTN1, Reticulon-1, NSP, Reticulon 1
Gene ID:	6252
UniProt:	<a href="#">Q16799</a>

## Application Details

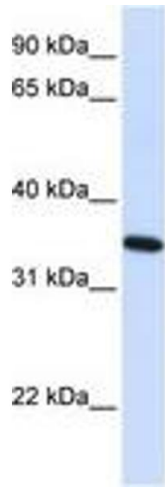
---

Application Notes:	Approved: WB (0.2 - 1 µg/mL)  Usage: Western Blot: Suggested dilution at 1 µg/mL in 5 % skim milk / PBS buffer, and HRP conjugated anti-Rabbit IgG should be diluted in 1: 50,000 - 100,000 as second antibody. ELISA titer in peptide based assay: 1:62500.
Comment:	Target Species of Antibody: Human
Restrictions:	For Research Use only

## Handling

---

Format:	Lyophilized
Reconstitution:	Distilled water
Concentration:	Lot specific
Buffer:	Lyophilized from PBS with 2 % sucrose
Handling Advice:	Avoid repeat freeze-thaw cycles.
Storage:	4 °C, -20 °C
Storage Comment:	Long term: -20°C, the use of 50% glycerol is recommended if storing aliquots in -20°C for long term use (up to 1 year) Short term (less than 1 week): 4°C. Avoid freeze-thaw cycles.



**Image 1.**