



[Go to Product page](#)

Datasheet for ABIN6741063

anti-Reticulon 1 antibody (C-Term)

1 Image

Overview

Quantity:	100 µL
Target:	Reticulon 1 (RTN1)
Binding Specificity:	C-Term
Reactivity:	Human, Mouse, Rat, Rabbit, Monkey, Pig, Dog, Guinea Pig, Zebrafish (Danio rerio), Horse
Host:	Rabbit
Clonality:	Polyclonal
Conjugate:	This Reticulon 1 antibody is un-conjugated
Application:	Western Blotting (WB)

Product Details

Immunogen:	Synthetic peptide from C-Terminus of human RTN1 (Q9BQ59, NP_996734). Percent identity by BLAST analysis: Human, Chimpanzee, Gorilla, Monkey, Marmoset, Mouse, Rat, Elephant, Dog, Rabbit, Horse, Pig, Guinea pig, Sablefish, Stickleback, Pufferfish, Zebrafish (100%), Gibbon, Bovine, Turkey, Zebra finch, Chicken, Platypus (92%), Medaka (90%), Orangutan, Galago, Sheep, Bat, Opossum, Lizard, Catfish (85%). Type of Immunogen: Synthetic peptide
Isotype:	IgG
Specificity:	Human RTN1 / Reticulon 1
Predicted Reactivity:	Percent identity by BLAST analysis: Human, Mouse, Rat, Dog, Rabbit, Guinea pig (100%) Bovine, Chicken (92%).

Product Details

Purification: Immunoaffinity purified

Target Details

Target: Reticulon 1 (RTN1)

Alternative Name: RTN1 / Reticulon 1 ([RTN1 Products](#))

Background: Name/Gene ID: RTN1
Family: Reticulon

Synonyms: RTN1, Reticulon-1, NSP, Reticulon 1

Gene ID: 6252

NCBI Accession: [NP_996734](#)

UniProt: [Q16799](#)

Application Details

Application Notes: Approved: WB (0.2 - 1 µg/mL)

Usage: Western Blot: Suggested dilution at 1 µg/mL in 5 % skim milk / PBS buffer, and HRP conjugated anti-Rabbit IgG should be diluted in 1: 50,000 - 100,000 as second antibody. ELISA titer in peptide based assay: 1:1562500.

Comment: Target Species of Antibody: Human

Restrictions: For Research Use only

Handling

Format: Lyophilized

Reconstitution: Distilled water

Concentration: Lot specific

Buffer: Lyophilized from PBS with 2 % sucrose

Handling Advice: Avoid repeat freeze-thaw cycles.

Storage: 4 °C, -20 °C

Storage Comment: Long term: -20°C, the use of 50% glycerol is recommended if storing aliquots in -20°C for long

Handling

term use (up to 1 year)

Short term (less than 1 week): 4°C. Avoid freeze-thaw cycles.

Images

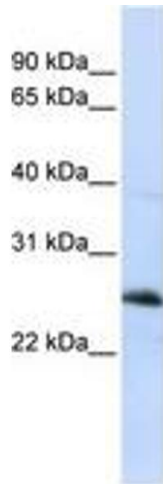


Image 1.