



[Go to Product page](#)

Datasheet for ABIN6741069  
**anti-PAQR6 antibody (AA 72-121)**

1 Image

Overview

Quantity:	100 µL
Target:	PAQR6
Binding Specificity:	AA 72-121
Reactivity:	Human, Mouse, Rat, Cow, Guinea Pig, Horse, Rabbit, Zebrafish (Danio rerio), Bat, Monkey, Pig
Host:	Rabbit
Clonality:	Polyclonal
Conjugate:	This PAQR6 antibody is un-conjugated
Application:	Western Blotting (WB)

Product Details

Immunogen:	Synthetic peptide located between aa72-121 of human PAQR6 (Q5TCK9, NP_079173). Percent identity by BLAST analysis: Human, Chimpanzee, Gorilla, Gibbon, Monkey, Galago, Marmoset, Mouse, Rat, Elephant, Panda, Bovine, Bat, Rabbit, Horse, Pig, Guinea pig (100%), Opossum (92%), Xenopus, Zebrafish (85%), Catfish (84%).  Type of Immunogen: Synthetic peptide
Isotype:	IgG
Specificity:	Human PAQR6
Predicted Reactivity:	Percent identity by BLAST analysis: Human, Mouse, Rat, Bovine, Rabbit, Horse, Pig (100%) Zebrafish (83%).
Purification:	Immunoaffinity purified

## Target Details

---

Target:	PAQR6
Alternative Name:	PAQR6 ( <a href="#">PAQR6 Products</a> )
Background:	Name/Gene ID: PAQR6  Synonyms: PAQR6
Gene ID:	79957
NCBI Accession:	<a href="#">NP_079173</a>
UniProt:	<a href="#">Q6TCH4</a>

## Application Details

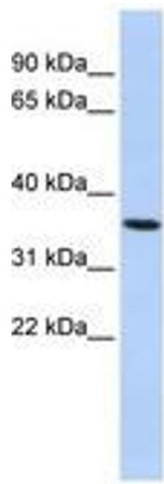
---

Application Notes:	Approved: WB (0.2 - 1 µg/mL)  Usage: Western Blot: Suggested dilution at 1 µg/mL in 5 % skim milk / PBS buffer, and HRP conjugated anti-Rabbit IgG should be diluted in 1: 50,000 - 100,000 as second antibody. ELISA titer in peptide based assay: 1:312500.
Comment:	Target Species of Antibody: Human
Restrictions:	For Research Use only

## Handling

---

Format:	Lyophilized
Reconstitution:	Distilled water
Concentration:	Lot specific
Buffer:	Lyophilized from PBS with 2 % sucrose
Handling Advice:	Avoid repeat freeze-thaw cycles.
Storage:	4 °C, -20 °C
Storage Comment:	Long term: -20°C, the use of 50% glycerol is recommended if storing aliquots in -20°C for long term use (up to 1 year)  Short term (less than 1 week): 4°C. Avoid freeze-thaw cycles.



**Image 1.**