



[Go to Product page](#)

Datasheet for ABIN6741070
anti-MOGAT2 antibody (AA 180-229)

1 Image

Overview

Quantity:	100 µL
Target:	MOGAT2
Binding Specificity:	AA 180-229
Reactivity:	Human, Mouse, Rat, Rabbit, Horse, Chicken, Monkey
Host:	Rabbit
Clonality:	Polyclonal
Conjugate:	This MOGAT2 antibody is un-conjugated
Application:	Western Blotting (WB)

Product Details

Immunogen:	Synthetic peptide located between aa180-229 of human MOGAT2 (Q3SYC2, NP_079374). Percent identity by BLAST analysis: Human, Chimpanzee, Gibbon, Monkey, Marmoset, Mouse, Rat, Rabbit, Opossum, Zebra finch, Chicken (100%), Galago, Dog, Bovine, Pig, Turkey, Platypus, Salmon (92%), Guinea pig (85%), Hamster, Bat, Horse, Xenopus, Drosophila, Slime mold (84%). Type of Immunogen: Synthetic peptide
Isotype:	IgG
Specificity:	Human MOGAT2
Predicted Reactivity:	Percent identity by BLAST analysis: Rat, Rabbit, Chicken (100%) Dog, Bovine, Pig (92%) Horse (84%).
Purification:	Immunoaffinity purified

Target Details

Target:	MOGAT2
Alternative Name:	MOGAT2 (MOGAT2 Products)
Background:	Name/Gene ID: MOGAT2 Synonyms: MOGAT2, DC5, DGAT2L5, HDC5, HMGAT2
Gene ID:	80168
NCBI Accession:	NP_079374
UniProt:	Q3SYC2

Application Details

Application Notes:	Approved: WB (0.2 - 1 µg/mL) Usage: Western Blot: Suggested dilution at 1 µg/mL in 5 % skim milk / PBS buffer, and HRP conjugated anti-Rabbit IgG should be diluted in 1: 50,000 - 100,000 as second antibody. ELISA titer in peptide based assay: 1:62500.
Comment:	Target Species of Antibody: Human
Restrictions:	For Research Use only

Handling

Format:	Lyophilized
Reconstitution:	Distilled water
Concentration:	Lot specific
Buffer:	Lyophilized from PBS with 2 % sucrose
Handling Advice:	Avoid repeat freeze-thaw cycles.
Storage:	4 °C, -20 °C
Storage Comment:	Long term: -20°C, the use of 50% glycerol is recommended if storing aliquots in -20°C for long term use (up to 1 year) Short term (less than 1 week): 4°C. Avoid freeze-thaw cycles.

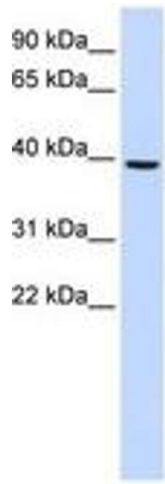


Image 1.