



Datasheet for ABIN6741071
anti-CJ057 antibody (AA 36-85)



[Go to Product page](#)

1 Image

Overview

Quantity:	100 µL
Target:	CJ057 (C10ORF57)
Binding Specificity:	AA 36-85
Reactivity:	Human, Horse, Pig
Host:	Rabbit
Clonality:	Polyclonal
Conjugate:	This CJ057 antibody is un-conjugated
Application:	Western Blotting (WB)

Product Details

Immunogen:	Synthetic peptide located between aa36-85 of human TMEM254 (Q8TBM7, NP_079401). Percent identity by BLAST analysis: Human, Chimpanzee, Gorilla, Orangutan, Gibbon, Horse (100%), Monkey, Bovine, Bat (92%), Galago, Marmoset, Mouse, Rat, Panda, Dog, Pig, Guinea pig, Platypus (85%). Type of Immunogen: Synthetic peptide
Isotype:	IgG
Specificity:	Human C10orf57
Predicted Reactivity:	Percent identity by BLAST analysis: Human (100%) Pig (85%).
Purification:	Immunoaffinity purified

Target Details

Target:	CJ057 (C10ORF57)
Alternative Name:	TMEM254 / C10orf57 (C10ORF57 Products)
Background:	Name/Gene ID: TMEM254 Synonyms: TMEM254, C10orf57, BA369J21.6, RP11-369J21.6, Transmembrane protein 254
Gene ID:	80195
NCBI Accession:	NP_079401
UniProt:	Q8TBM7

Application Details

Application Notes:	Approved: WB (0.2 - 1 µg/mL) Usage: Western Blot: Suggested dilution at 1 µg/mL in 5 % skim milk / PBS buffer, and HRP conjugated anti-Rabbit IgG should be diluted in 1: 50,000 - 100,000 as second antibody. ELISA titer in peptide based assay: 1:312500.
Comment:	Target Species of Antibody: Human
Restrictions:	For Research Use only

Handling

Format:	Lyophilized
Reconstitution:	Distilled water
Concentration:	Lot specific
Buffer:	Lyophilized from PBS with 2 % sucrose
Handling Advice:	Avoid repeat freeze-thaw cycles.
Storage:	4 °C, -20 °C
Storage Comment:	Long term: -20°C, the use of 50% glycerol is recommended if storing aliquots in -20°C for long term use (up to 1 year) Short term (less than 1 week): 4°C. Avoid freeze-thaw cycles.

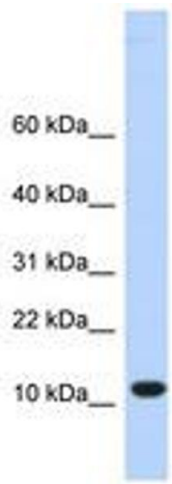


Image 1.