

Datasheet for ABIN6741078  
**anti-TMEM132B antibody (AA 828-877)**



[Go to Product page](#)

1 Image

Overview

Quantity:	100 µL
Target:	TMEM132B
Binding Specificity:	AA 828-877
Reactivity:	Mouse, Human, Cow, Dog
Host:	Rabbit
Clonality:	Polyclonal
Conjugate:	This TMEM132B antibody is un-conjugated
Application:	Western Blotting (WB)

Product Details

Immunogen:	Synthetic peptide located between aa828-877 of human TMEM132B (Q14DG7, NP_443139). Percent identity by BLAST analysis: Human, Chimpanzee, Gorilla, Gibbon, Marmoset (100%), Monkey, Galago, Elephant, Horse, Opossum (92%), Dog, Bovine (85%), Mouse (78%).  Type of Immunogen: Synthetic peptide
Isotype:	IgG
Specificity:	Human TMEM132B
Predicted Reactivity:	Percent identity by BLAST analysis: Horse (92%) Dog, Bovine (85%).
Purification:	Immunoaffinity purified

## Target Details

---

Target:	TMEM132B
Alternative Name:	TMEM132B ( <a href="#">TMEM132B Products</a> )
Background:	Name/Gene ID: TMEM132B  Synonyms: TMEM132B, KIAA1786, Transmembrane protein 132B, KIAA1906
Gene ID:	114795
NCBI Accession:	<a href="#">NP_443139</a>
UniProt:	<a href="#">Q14DG7</a>

## Application Details

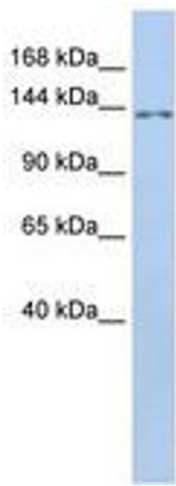
---

Application Notes:	Approved: WB (0.2 - 1 µg/mL)  Usage: Western Blot: Suggested dilution at 1 µg/mL in 5 % skim milk / PBS buffer, and HRP conjugated anti-Rabbit IgG should be diluted in 1: 50,000 - 100,000 as second antibody. ELISA titer in peptide based assay: 1:62500.
Comment:	Target Species of Antibody: Human
Restrictions:	For Research Use only

## Handling

---

Format:	Lyophilized
Reconstitution:	Distilled water
Concentration:	Lot specific
Buffer:	Lyophilized from PBS with 2 % sucrose
Handling Advice:	Avoid repeat freeze-thaw cycles.
Storage:	4 °C, -20 °C
Storage Comment:	Long term: -20°C, the use of 50% glycerol is recommended if storing aliquots in -20°C for long term use (up to 1 year)  Short term (less than 1 week): 4°C. Avoid freeze-thaw cycles.



**Image 1.**