



[Go to Product page](#)

Datasheet for ABIN6741082

## anti-DBX1 antibody (AA 248-297)

### 1 Image

#### Overview

Quantity:	100 µL
Target:	DBX1
Binding Specificity:	AA 248-297
Reactivity:	Human, Dog, Guinea Pig, Rabbit, Monkey
Host:	Rabbit
Clonality:	Polyclonal
Conjugate:	This DBX1 antibody is un-conjugated
Application:	Western Blotting (WB)

#### Product Details

Immunogen:	Synthetic peptide located between aa248-297 of human DBX1 (A6NMT0, NP_001025036). Percent identity by BLAST analysis: Human, Gorilla, Marmoset, Guinea pig (100%), Gibbon, Galago, Mouse, Rat, Hamster, Elephant, Bovine, Horse, Pig (92%), Rabbit (85%), Dog (84%).  Type of Immunogen: Synthetic peptide
Isotype:	IgG
Specificity:	Human DBX1
Predicted Reactivity:	Percent identity by BLAST analysis: Human, Guinea pig (100%) Mouse, Rat, Bovine (92%) Rabbit (85%) Dog (84%).
Purification:	Immunoaffinity purified

## Target Details

---

Target: DBX1

Alternative Name: DBX1 ([DBX1 Products](#))

Background: Name/Gene ID: DBX1

Synonyms: DBX1, Developing brain homeobox 1, Homeobox protein DBX1

Gene ID: 120237

NCBI Accession: [NP\\_001025036](#)

UniProt: [A6NMT0](#)

## Application Details

---

Application Notes: Approved: WB (0.2 - 1 µg/mL)

Usage: Western Blot: Suggested dilution at 1 µg/mL in 5 % skim milk / PBS buffer, and HRP conjugated anti-Rabbit IgG should be diluted in 1: 50,000 - 100,000 as second antibody. ELISA titer in peptide based assay: 1:62500.

Comment: Target Species of Antibody: Human

Restrictions: For Research Use only

## Handling

---

Format: Lyophilized

Reconstitution: Distilled water

Concentration: Lot specific

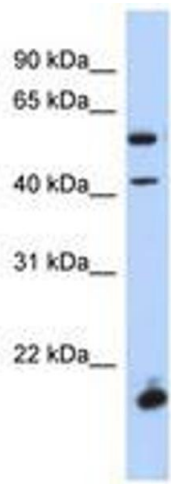
Buffer: Lyophilized from PBS with 2 % sucrose

Handling Advice: Avoid repeat freeze-thaw cycles.

Storage: 4 °C, -20 °C

Storage Comment: Long term: -20°C, the use of 50% glycerol is recommended if storing aliquots in -20°C for long term use (up to 1 year)

Short term (less than 1 week): 4°C. Avoid freeze-thaw cycles.



**Image 1.**