



[Go to Product page](#)

Datasheet for ABIN674109
anti-RSV antibody (AA 151-250)

3 Images

Overview

Quantity:	100 µL
Target:	RSV
Binding Specificity:	AA 151-250
Reactivity:	Human, Human respiratory syncytial virus A, Virus
Host:	Rabbit
Clonality:	Polyclonal
Conjugate:	This RSV antibody is un-conjugated
Application:	Immunofluorescence (Cultured Cells) (IF (cc)), Immunofluorescence (Paraffin-embedded Sections) (IF (p))

Product Details

Immunogen:	KLH conjugated synthetic peptide derived from Human respiratory syncytial virus A2 major surface glycoprotein G
Isotype:	IgG
Cross-Reactivity:	Human, Virus
Cross-Reactivity (Details):	HRSVA
Purification:	Purified by Protein A.

Target Details

Target:	RSV
---------	-----

Target Details

Alternative Name: RSV ([RSV Products](#))

Target Type: Virus

Background: Synonyms: RS virus, RSV, GLYC_HRSVA, Major surface glycoprotein G, Attachment glycoprotein G, Membrane-bound glycoprotein, mG, G.

Background: Respiratory syncytial virus (RSV) is a major cause of respiratory illness in young children. RSV infection produces a variety of signs and symptoms involving different areas of the respiratory tract, from the nose to the lungs. RSV is a negative sense, enveloped RNA virus. The virion is variable in shape and size with average diameter of between 120 and 300 nm. The 63 kD RSV fusion protein of the RSS 2 strain (subtype A) directs fusion of viral and cellular membranes, results in viral penetration, and can direct fusion of infected cells with adjoining cells, resulting in the formation of syncytia or multi nucleated giant cells.

UniProt: [P03423](#)

Application Details

Application Notes: ELISA 1:500-1000
IHC-P 1:200-400
IHC-F 1:100-500
IF(IHC-P) 1:50-200
IF(IHC-F) 1:50-200
IF(ICC) 1:50-200

Restrictions: For Research Use only

Handling

Format: Liquid

Concentration: 1 µg/µL

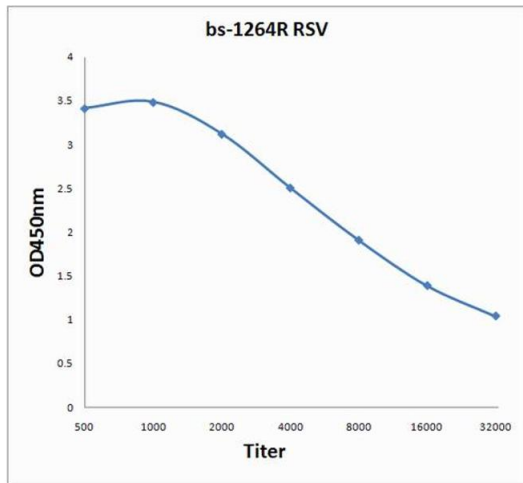
Buffer: 0.01M TBS(pH 7.4) with 1 % BSA, 0.02 % Proclin300 and 50 % Glycerol.

Preservative: ProClin

Precaution of Use: This product contains ProClin: a POISONOUS AND HAZARDOUS SUBSTANCE, which should be handled by trained staff only.

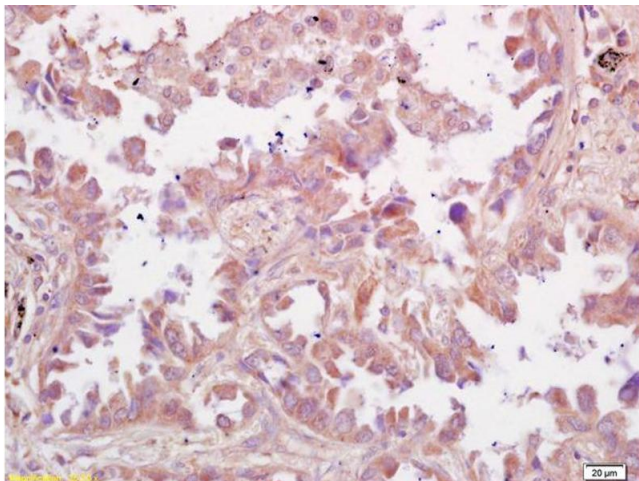
Storage: 4 °C,-20 °C

Storage Comment: Shipped at 4°C. Store at -20°C for one year. Avoid repeated freeze/thaw cycles.



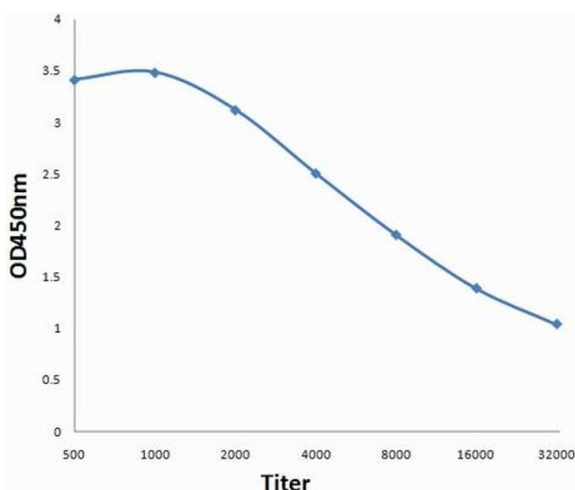
ELISA

Image 1. Antigen: 0.2 µg/100 µL Primary: Antiserum, 1:500, 1:1000, 1:2000, 1:4000, 1:8000, 1:16000, 1:32000; Secondary: HRP conjugated Goat-Anti-Rabbit IgG at 1: 5000; TMB staining; Read the data in MicroplateReader by 450



Immunohistochemistry

Image 2. Formalin-fixed and paraffin embedded human lung carcinoma labeled with Rabbit Anti RSV Polyclonal Antibody, Unconjugated (ABIN674109) at 1:200 followed by conjugation to the secondary antibody and DAB staining



ELISA

Image 3. Antigen: 0.2ug/100ul, Primary: Antiserum, 1:500, 1:1000, 1:2000, 1:4000, 1:8000, 1:16000, 1:32000, Secondary: HRP conjugated Goat-Anti-Rabbit IgG at 1: 5000, TMB staining, Read the data in MicroplateReader by 450nm