



[Go to Product page](#)

Datasheet for ABIN6741093  
**anti-FAM164B antibody (C-Term)**

1 Image

Overview

Quantity:	100 µL
Target:	FAM164B (ZC2HC1B)
Binding Specificity:	C-Term
Reactivity:	Human, Horse, Rabbit
Host:	Rabbit
Clonality:	Polyclonal
Conjugate:	This FAM164B antibody is un-conjugated
Application:	Western Blotting (WB)

Product Details

Immunogen:	Synthetic peptide from C-Terminus of human ZC2HC1B (Q5TFG8). Percent identity by BLAST analysis: Human, Gorilla, Gibbon (100%), Galago, Marmoset, Dog, Bovine, Pig (92%), Bat, Rabbit, Horse (85%).  Type of Immunogen: Synthetic peptide
Isotype:	IgG
Specificity:	Human C6orf94
Predicted Reactivity:	Percent identity by BLAST analysis: Dog, Pig (92%) Rabbit, Horse (85%).
Purification:	Immunoaffinity purified

## Target Details

---

Target: FAM164B (ZC2HC1B)

Alternative Name: ZC2HC1B / FAM164B ([ZC2HC1B Products](#))

Background: Name/Gene ID: ZC2HC1B

Synonyms: ZC2HC1B, C6orf94, DJ468K18.5, FAM164B, Protein FAM164B

Gene ID: 153918

UniProt: [Q5TFG8](#)

## Application Details

---

Application Notes: Approved: WB (0.2 - 1 µg/mL)

Usage: Western Blot: Suggested dilution at 1 µg/mL in 5 % skim milk / PBS buffer, and HRP conjugated anti-Rabbit IgG should be diluted in 1: 50,000 - 100,000 as second antibody. ELISA titer in peptide based assay: 1:312500.

Comment: Target Species of Antibody: Human

Restrictions: For Research Use only

## Handling

---

Format: Lyophilized

Reconstitution: Distilled water

Concentration: Lot specific

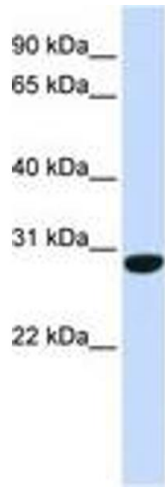
Buffer: Lyophilized from PBS with 2 % sucrose

Handling Advice: Avoid repeat freeze-thaw cycles.

Storage: 4 °C, -20 °C

Storage Comment: Long term: -20°C, the use of 50% glycerol is recommended if storing aliquots in -20°C for long term use (up to 1 year)

Short term (less than 1 week): 4°C. Avoid freeze-thaw cycles.



**Image 1.**