



[Go to Product page](#)

Datasheet for ABIN6741109
anti-CYP27A1 antibody (AA 432-481)

1 Image

Overview

Quantity:	100 µL
Target:	CYP27A1
Binding Specificity:	AA 432-481
Reactivity:	Human, Monkey
Host:	Rabbit
Clonality:	Polyclonal
Conjugate:	This CYP27A1 antibody is un-conjugated
Application:	Western Blotting (WB)

Product Details

Immunogen:	Synthetic peptide located between aa432-481 of human CYP27A1 (Q02318, NP_000775). Percent identity by BLAST analysis: Human, Chimpanzee, Gorilla, Gibbon, Monkey (100%), Marmoset (85%). Type of Immunogen: Synthetic peptide
Isotype:	IgG
Specificity:	Human CYP27A1
Predicted Reactivity:	Percent identity by BLAST analysis: Human, Monkey (100%).
Purification:	Immunoaffinity purified

Target Details

Target:	CYP27A1
Alternative Name:	CYP27 / CYP27A1 (CYP27A1 Products)
Background:	Name/Gene ID: CYP27A1 Family: Cytochrome P450 Synonyms: CYP27A1, Cytochrome P450 27, CTX, Cytochrome P-450C27/25, CP27, Vitamin D(3) 25-hydroxylase, CYP27, Sterol 27-hydroxylase
Gene ID:	1593
NCBI Accession:	NP_000775
UniProt:	Q02318

Application Details

Application Notes:	Approved: WB (0.2 - 1 µg/mL) Usage: Western Blot: Suggested dilution at 1 µg/mL in 5 % skim milk / PBS buffer, and HRP conjugated anti-Rabbit IgG should be diluted in 1: 50,000 - 100,000 as second antibody. ELISA titer in peptide based assay: 1:62500.
Comment:	Target Species of Antibody: Human
Restrictions:	For Research Use only

Handling

Format:	Lyophilized
Reconstitution:	Distilled water
Concentration:	Lot specific
Buffer:	Lyophilized from PBS with 2 % sucrose
Handling Advice:	Avoid repeat freeze-thaw cycles.
Storage:	4 °C, -20 °C
Storage Comment:	Long term: -20°C, the use of 50% glycerol is recommended if storing aliquots in -20°C for long term use (up to 1 year) Short term (less than 1 week): 4°C. Avoid freeze-thaw cycles.

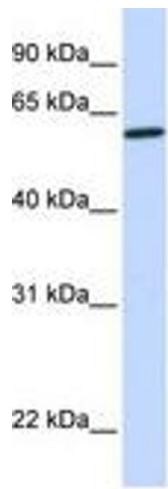


Image 1.