



Datasheet for ABIN6741111
anti-ALKBH2 antibody (AA 108-157)



[Go to Product page](#)

1 Image

Overview

Quantity:	100 µL
Target:	ALKBH2
Binding Specificity:	AA 108-157
Reactivity:	Human, Mouse, Rat, Rabbit, Guinea Pig, Monkey, Pig
Host:	Rabbit
Clonality:	Polyclonal
Conjugate:	This ALKBH2 antibody is un-conjugated
Application:	Western Blotting (WB)

Product Details

Immunogen:	Synthetic peptide located between aa108-157 of human ALKBH2 (Q6NS38, NP_001001655). Percent identity by BLAST analysis: Human, Chimpanzee, Gorilla, Gibbon, Monkey, Marmoset, Mouse, Rat, Rabbit, Pig, Guinea pig (100%), Galago, Elephant, Dog, Bovine, Bat, Horse, Stickleback (92%), Panda, Platypus (85%). Type of Immunogen: Synthetic peptide
Isotype:	IgG
Specificity:	Human ALKBH2
Predicted Reactivity:	Percent identity by BLAST analysis: Human, Rat, Pig (100%) Dog (92%).
Purification:	Immunoaffinity purified

Target Details

Target:	ALKBH2
Alternative Name:	ABH2 / ALKBH2 (ALKBH2 Products)
Background:	Name/Gene ID: ALKBH2 Synonyms: ALKBH2, 2OG-Fe(II) oxy DC1, ABH2, Oxy DC1
Gene ID:	121642
NCBI Accession:	NP_001001655
UniProt:	Q6NS38
Pathways:	DNA Damage Repair

Application Details

Application Notes:	Approved: WB (0.2 - 1 µg/mL) Usage: Western Blot: Suggested dilution at 1 µg/mL in 5 % skim milk / PBS buffer, and HRP conjugated anti-Rabbit IgG should be diluted in 1: 50,000 - 100,000 as second antibody. ELISA titer in peptide based assay: 1:62500.
Comment:	Target Species of Antibody: Human
Restrictions:	For Research Use only

Handling

Format:	Lyophilized
Reconstitution:	Distilled water
Concentration:	Lot specific
Buffer:	Lyophilized from PBS with 2 % sucrose
Handling Advice:	Avoid repeat freeze-thaw cycles.
Storage:	4 °C,-20 °C
Storage Comment:	Long term: -20°C, the use of 50% glycerol is recommended if storing aliquots in -20°C for long term use (up to 1 year) Short term (less than 1 week): 4°C. Avoid freeze-thaw cycles.

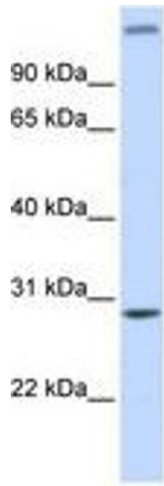


Image 1.