



[Go to Product page](#)

Datasheet for ABIN6741115
anti-PM20D2 antibody (AA 252-301)

1 Image

Overview

Quantity:	100 µL
Target:	PM20D2
Binding Specificity:	AA 252-301
Reactivity:	Human, Rat, Mouse, Cow, Dog, Guinea Pig, Horse, Bat, Monkey, Pig, Xenopus laevis
Host:	Rabbit
Clonality:	Polyclonal
Conjugate:	This PM20D2 antibody is un-conjugated
Application:	Western Blotting (WB)

Product Details

Immunogen:	Synthetic peptide located between aa252-301 of human PM20D2 (Q8IYS1, NP_001010853). Percent identity by BLAST analysis: Human, Chimpanzee, Gibbon, Monkey, Galago, Marmoset, Mouse, Rat, Elephant, Panda, Dog, Bovine, Bat, Horse, Pig, Opossum, Guinea pig, Xenopus (100%), Rabbit, Turkey, Zebra finch, Chicken, Lizard (92%). Type of Immunogen: Synthetic peptide
Isotype:	IgG
Specificity:	Human PM20D2
Predicted Reactivity:	Percent identity by BLAST analysis: Rat, Dog, Bovine, Horse, Pig, Guinea pig (100%) Rabbit, Chicken (92%).
Purification:	Immunoaffinity purified

Target Details

Target:	PM20D2
Alternative Name:	PM20D2 / ACY1L2 (PM20D2 Products)
Background:	Name/Gene ID: PM20D2 Synonyms: PM20D2, ACY1L2, Aminoacylase 1-like protein 2, Aminoacylase-1-like protein 2, Aminoacylase 1-like 2, BA63L7.3
Gene ID:	135293
NCBI Accession:	NP_001010853
UniProt:	Q8IYS1

Application Details

Application Notes:	Approved: WB (0.2 - 1 µg/mL) Usage: Western Blot: Suggested dilution at 1 µg/mL in 5 % skim milk / PBS buffer, and HRP conjugated anti-Rabbit IgG should be diluted in 1: 50,000 - 100,000 as second antibody. ELISA titer in peptide based assay: 1:62500.
Comment:	Target Species of Antibody: Human
Restrictions:	For Research Use only

Handling

Format:	Lyophilized
Reconstitution:	Distilled water
Concentration:	Lot specific
Buffer:	Lyophilized from PBS with 2 % sucrose
Handling Advice:	Avoid repeat freeze-thaw cycles.
Storage:	4 °C,-20 °C
Storage Comment:	Long term: -20°C, the use of 50% glycerol is recommended if storing aliquots in -20°C for long term use (up to 1 year) Short term (less than 1 week): 4°C. Avoid freeze-thaw cycles.

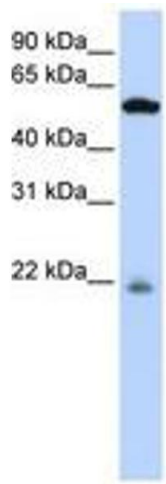


Image 1.