



[Go to Product page](#)

Datasheet for ABIN6741116  
**anti-FAM78B antibody (AA 144-193)**

1 Image

Overview

Quantity:	100 µL
Target:	FAM78B
Binding Specificity:	AA 144-193
Reactivity:	Human, Mouse, Rat, Cow, Dog, Guinea Pig, Horse, Rabbit, Bat, Monkey, Pig
Host:	Rabbit
Clonality:	Polyclonal
Conjugate:	This FAM78B antibody is un-conjugated
Application:	Western Blotting (WB)

Product Details

Immunogen:	Synthetic peptide located between aa144-193 of human FAM78B (Q5VT40, NP_001017961). Percent identity by BLAST analysis: Human, Chimpanzee, Gorilla, Gibbon, Monkey, Galago, Marmoset, Mouse, Rat, Elephant, Panda, Dog, Bovine, Bat, Rabbit, Horse, Pig, Opossum, Guinea pig, Platypus, Lizard (100%), Zebra finch, Chicken, Xenopus (92%).  Type of Immunogen: Synthetic peptide
Isotype:	IgG
Specificity:	Human FAM78B
Predicted Reactivity:	Percent identity by BLAST analysis: Mouse, Dog, Bovine, Rabbit, Horse, Pig (100%) Chicken (92%).
Purification:	Immunoaffinity purified

## Target Details

---

Target:	FAM78B
Alternative Name:	FAM78B ( <a href="#">FAM78B Products</a> )
Background:	Name/Gene ID: FAM78B  Synonyms: FAM78B, Protein FAM78B
Gene ID:	149297
NCBI Accession:	<a href="#">NP_001017961</a>
UniProt:	<a href="#">Q5VT40</a>

## Application Details

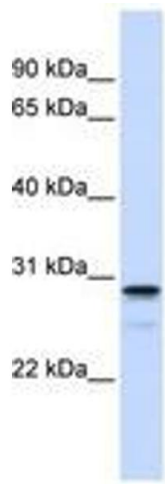
---

Application Notes:	Approved: WB (0.2 - 1 µg/mL)  Usage: Western Blot: Suggested dilution at 1 µg/mL in 5 % skim milk / PBS buffer, and HRP conjugated anti-Rabbit IgG should be diluted in 1: 50,000 - 100,000 as second antibody. ELISA titer in peptide based assay: 1:12500.
Comment:	Target Species of Antibody: Human
Restrictions:	For Research Use only

## Handling

---

Format:	Lyophilized
Reconstitution:	Distilled water
Concentration:	Lot specific
Buffer:	Lyophilized from PBS with 2 % sucrose
Handling Advice:	Avoid repeat freeze-thaw cycles.
Storage:	4 °C, -20 °C
Storage Comment:	Long term: -20°C, the use of 50% glycerol is recommended if storing aliquots in -20°C for long term use (up to 1 year)  Short term (less than 1 week): 4°C. Avoid freeze-thaw cycles.



**Image 1.**