

Datasheet for ABIN6741128  
**anti-RAB40B antibody (AA 144-193)**[Go to Product page](#)

## 1 Image

## Overview

Quantity:	100 µL
Target:	RAB40B
Binding Specificity:	AA 144-193
Reactivity:	Human, Mouse, Rat, Guinea Pig, Rabbit, Zebrafish (Danio rerio), Chicken, Monkey, Pig, Xenopus laevis
Host:	Rabbit
Clonality:	Polyclonal
Conjugate:	This RAB40B antibody is un-conjugated
Application:	Western Blotting (WB)

## Product Details

Immunogen:	Synthetic peptide located between aa144-193 of human RAB40B (Q12829, NP_006813). Percent identity by BLAST analysis: Human, Chimpanzee, Gorilla, Monkey, Marmoset, Mouse, Rat, Elephant, Rabbit, Pig, Guinea pig, Chicken, Xenopus, Zebrafish (100%), Gibbon, Bovine, Horse (92%), Bat, Drosophila (84%).  Type of Immunogen: Synthetic peptide
Isotype:	IgG
Specificity:	Human RAB40B
Predicted Reactivity:	Percent identity by BLAST analysis: Human, Mouse, Rat, Chicken, Xenopus, Zebrafish (100%) Bovine (92%).

## Product Details

Purification: Immunoaffinity purified

## Target Details

Target: RAB40B

Alternative Name: RAB40B ([RAB40B Products](#))

Background: Name/Gene ID: RAB40B  
Subfamily: RAS oncogene  
Family: Ras GTPase superfamily IPR001806

Synonyms: RAB40B, Protein Rar, Ras-related protein Rab-40B, SEC4L, RAR

Gene ID: 10966

NCBI Accession: [NP\\_006813](#)

UniProt: [Q12829](#)

## Application Details

Application Notes: Approved: WB (0.2 - 1 µg/mL)

Usage: Western Blot: Suggested dilution at 1 µg/mL in 5 % skim milk / PBS buffer, and HRP conjugated anti-Rabbit IgG should be diluted in 1: 50,000 - 100,000 as second antibody. ELISA titer in peptide based assay: 1:12500.

Comment: Target Species of Antibody: Human

Restrictions: For Research Use only

## Handling

Format: Lyophilized

Reconstitution: Distilled water

Concentration: Lot specific

Buffer: Lyophilized from PBS with 2 % sucrose

Handling Advice: Avoid repeat freeze-thaw cycles.

Storage: 4 °C, -20 °C

## Handling

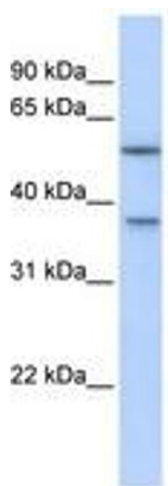
---

Storage Comment: Long term: -20°C, the use of 50% glycerol is recommended if storing aliquots in -20°C for long term use (up to 1 year)

Short term (less than 1 week): 4°C. Avoid freeze-thaw cycles.

## Images

---



**Image 1.**