



[Go to Product page](#)

Datasheet for ABIN6741140
anti-GLMN antibody (AA 436-479)

1 Image

Overview

Quantity:	100 µL
Target:	GLMN
Binding Specificity:	AA 436-479
Reactivity:	Human, Mouse, Rat, Cow, Dog, Guinea Pig, Horse, Zebrafish (Danio rerio), Bat, Monkey, Pig
Host:	Rabbit
Clonality:	Polyclonal
Conjugate:	This GLMN antibody is un-conjugated
Application:	Western Blotting (WB)

Product Details

Immunogen:	Synthetic peptide located between aa436-479 of mouse GLMN (Q6PGF2, NP_932776). Percent identity by BLAST analysis: Human, Chimpanzee, Gorilla, Gibbon, Monkey, Marmoset, Mouse, Rat, Elephant, Dog, Bovine, Bat, Horse, Pig, Opossum, Guinea pig, Turkey, Zebra finch, Platypus (100%), Chicken, Lizard, Xenopus (92%). Type of Immunogen: Synthetic peptide
Isotype:	IgG
Specificity:	Human GLMN
Predicted Reactivity:	Percent identity by BLAST analysis: Human, Mouse, Rat, Dog, Bovine, Horse, Pig, Guinea pig (100%) Chicken, Xenopus (92%).
Purification:	Immunoaffinity purified

Target Details

Target:	GLMN
Alternative Name:	GLMN (GLMN Products)
Background:	Name/Gene ID: GLMN Synonyms: GLMN, FAP68, GLML, GVM, FKBP-associated protein, Glomulin, VMGLOM, FAP48, FKBPAP
Gene ID:	11146
NCBI Accession:	NP_932776
UniProt:	Q92990
Pathways:	Tube Formation

Application Details

Application Notes:	Approved: WB (0.2 - 1 µg/mL) Usage: Western Blot: Suggested dilution at 1 µg/mL in 5 % skim milk / PBS buffer, and HRP conjugated anti-Rabbit IgG should be diluted in 1: 50,000 - 100,000 as second antibody. ELISA titer in peptide based assay: 1:2500.
Comment:	Target Species of Antibody: Mouse
Restrictions:	For Research Use only

Handling

Format:	Lyophilized
Reconstitution:	Distilled water
Concentration:	Lot specific
Buffer:	Lyophilized from PBS with 2 % sucrose
Handling Advice:	Avoid repeat freeze-thaw cycles.
Storage:	4 °C, -20 °C
Storage Comment:	Long term: -20°C, the use of 50% glycerol is recommended if storing aliquots in -20°C for long term use (up to 1 year) Short term (less than 1 week): 4°C. Avoid freeze-thaw cycles.

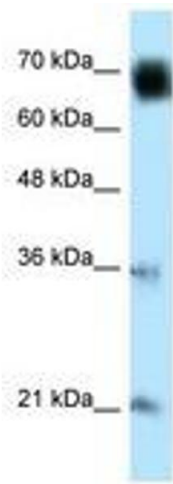


Image 1.