

Datasheet for ABIN6741143
anti-ACOT12 antibody (AA 216-265)[Go to Product page](#)

1 Image

Overview

Quantity:	100 µL
Target:	ACOT12
Binding Specificity:	AA 216-265
Reactivity:	Human, Mouse, Rat, Cow, Dog, Horse, Rabbit, Monkey, Bat, Pig, Xenopus laevis
Host:	Rabbit
Clonality:	Polyclonal
Conjugate:	This ACOT12 antibody is un-conjugated
Application:	Western Blotting (WB)

Product Details

Immunogen:	Synthetic peptide located between aa216-265 of human ACOT12 (Q8WYK0, NP_570123). Percent identity by BLAST analysis: Human, Chimpanzee, Gorilla, Gibbon, Monkey, Galago, Marmoset, Mouse, Rat, Dog, Bovine, Bat, Rabbit, Horse, Pig, Opossum, Platypus, Lizard, Xenopus (100%), Guinea pig (92%), Sea squirt (91%), Orangutan, Elephant, Panda, Turkey, Zebra finch, Chicken (85%). Type of Immunogen: Synthetic peptide
Isotype:	IgG
Specificity:	Human ACOT12
Predicted Reactivity:	Percent identity by BLAST analysis: Mouse, Rat, Dog, Bovine, Rabbit, Horse, Pig, Xenopus (100%) Guinea pig (92%) Chicken (85%).

Product Details

Purification: Immunoaffinity purified

Target Details

Target: ACOT12

Alternative Name: ACOT12 ([ACOT12 Products](#))

Background: Name/Gene ID: ACOT12

Synonyms: ACOT12, Acyl-CoA thioesterase 12, CACH, HCACH-1, CACH-1, CACH1, Cytosolic acetyl-CoA hydrolase, STARD15, THEAL

Gene ID: 134526

NCBI Accession: [NP_570123](#)

UniProt: [Q8WYK0](#)

Application Details

Application Notes: Approved: WB (0.2 - 1 µg/mL)

Usage: Western Blot: Suggested dilution at 1 µg/mL in 5 % skim milk / PBS buffer, and HRP conjugated anti-Rabbit IgG should be diluted in 1: 50,000 - 100,000 as second antibody. ELISA titer in peptide based assay: 1:12500.

Comment: Target Species of Antibody: Human

Restrictions: For Research Use only

Handling

Format: Lyophilized

Reconstitution: Distilled water

Concentration: Lot specific

Buffer: Lyophilized from PBS with 2 % sucrose

Handling Advice: Avoid repeat freeze-thaw cycles.

Storage: 4 °C, -20 °C

Storage Comment: Long term: -20°C, the use of 50% glycerol is recommended if storing aliquots in -20°C for long

Handling

term use (up to 1 year)

Short term (less than 1 week): 4°C. Avoid freeze-thaw cycles.

Images

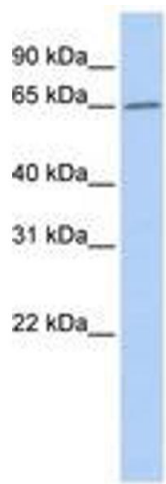


Image 1.