



[Go to Product page](#)

Datasheet for ABIN6741146
anti-FAM83F antibody (AA 288-337)

1 Image

Overview

Quantity:	100 µL
Target:	FAM83F
Binding Specificity:	AA 288-337
Reactivity:	Human, Mouse, Rat, Dog, Guinea Pig, Horse, Rabbit, Cow, Bat, Monkey, Pig
Host:	Rabbit
Clonality:	Polyclonal
Conjugate:	This FAM83F antibody is un-conjugated
Application:	Western Blotting (WB)

Product Details

Immunogen:	Synthetic peptide located between aa288-337 of human FAM83F (Q8NEG4, NP_612444). Percent identity by BLAST analysis: Human, Chimpanzee, Gorilla, Gibbon, Monkey, Galago, Mouse, Rat, Elephant, Dog, Bovine, Bat, Rabbit, Horse, Pig, Guinea pig (100%), Opossum, Turkey, Zebra finch, Lizard (92%), Chicken, Platypus (84%). Type of Immunogen: Synthetic peptide
Isotype:	IgG
Specificity:	Human FAM83F
Predicted Reactivity:	Percent identity by BLAST analysis: Rat, Dog, Bovine, Rabbit, Horse, Pig, Guinea pig (100%) Chicken (84%).
Purification:	Immunoaffinity purified

Target Details

Target:	FAM83F
Alternative Name:	FAM83F (FAM83F Products)
Background:	Name/Gene ID: FAM83F Synonyms: FAM83F, Protein FAM83F
Gene ID:	113828
NCBI Accession:	NP_612444
UniProt:	Q8NEG4

Application Details

Application Notes:	Approved: WB (0.2 - 1 µg/mL) Usage: Western Blot: Suggested dilution at 1 µg/mL in 5 % skim milk / PBS buffer, and HRP conjugated anti-Rabbit IgG should be diluted in 1: 50,000 - 100,000 as second antibody. ELISA titer in peptide based assay: 1:62500.
Comment:	Target Species of Antibody: Human
Restrictions:	For Research Use only

Handling

Format:	Lyophilized
Reconstitution:	Distilled water
Concentration:	Lot specific
Buffer:	Lyophilized from PBS with 2 % sucrose
Handling Advice:	Avoid repeat freeze-thaw cycles.
Storage:	4 °C, -20 °C
Storage Comment:	Long term: -20°C, the use of 50% glycerol is recommended if storing aliquots in -20°C for long term use (up to 1 year) Short term (less than 1 week): 4°C. Avoid freeze-thaw cycles.

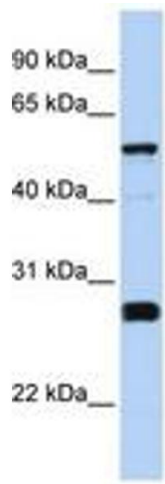


Image 1.