



[Go to Product page](#)

Datasheet for ABIN6741149
anti-ICA1L antibody (C-Term)

1 Image

Overview

Quantity:	100 µL
Target:	ICA1L
Binding Specificity:	C-Term
Reactivity:	Human, Rat, Mouse, Rabbit, Cow, Dog, Horse, Pig, Bat, Monkey
Host:	Rabbit
Clonality:	Polyclonal
Conjugate:	This ICA1L antibody is un-conjugated
Application:	Western Blotting (WB)

Product Details

Immunogen:	Synthetic peptide from C-Terminus of human ICA1L (Q8NDH6, NP_612477). Percent identity by BLAST analysis: Human, Gorilla, Gibbon, Monkey, Galago, Marmoset, Mouse, Rat, Panda, Dog, Bovine, Bat, Rabbit, Horse, Pig, Opossum, Platypus (100%), Stickleback (85%). Type of Immunogen: Synthetic peptide
Isotype:	IgG
Specificity:	Human ICA1L
Predicted Reactivity:	Percent identity by BLAST analysis: Human, Mouse, Rat, Dog, Rabbit, Horse, Pig (100%).
Purification:	Immunoaffinity purified

Target Details

Target:	ICA1L
Alternative Name:	ALS2CR15 / ICA1L (ICA1L Products)
Background:	Name/Gene ID: ICA1L Synonyms: ICA1L, ALS2CR15, Ica69-related protein, ALS2CR14
Gene ID:	130026
NCBI Accession:	NP_612477
UniProt:	Q8NDH6

Application Details

Application Notes:	Approved: WB (0.2 - 1 µg/mL) Usage: Western Blot: Suggested dilution at 1 µg/mL in 5 % skim milk / PBS buffer, and HRP conjugated anti-Rabbit IgG should be diluted in 1: 50,000 - 100,000 as second antibody. ELISA titer in peptide based assay: 1:2500.
Comment:	Target Species of Antibody: Human
Restrictions:	For Research Use only

Handling

Format:	Lyophilized
Reconstitution:	Distilled water
Concentration:	Lot specific
Buffer:	Lyophilized from PBS with 2 % sucrose
Handling Advice:	Avoid repeat freeze-thaw cycles.
Storage:	4 °C, -20 °C
Storage Comment:	Long term: -20°C, the use of 50% glycerol is recommended if storing aliquots in -20°C for long term use (up to 1 year) Short term (less than 1 week): 4°C. Avoid freeze-thaw cycles.

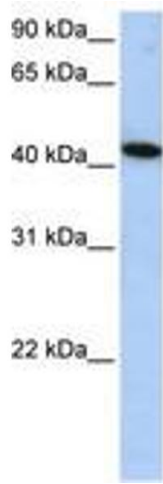


Image 1.