



Datasheet for ABIN6741157
anti-SLAIN1 antibody (AA 221-270)



[Go to Product page](#)

1 Image

Overview

Quantity:	100 µL
Target:	SLAIN1
Binding Specificity:	AA 221-270
Reactivity:	Human, Rat, Horse, Rabbit, Guinea Pig, Dog, Pig, Bat, Monkey
Host:	Rabbit
Clonality:	Polyclonal
Conjugate:	This SLAIN1 antibody is un-conjugated
Application:	Western Blotting (WB)

Product Details

Immunogen:	Synthetic peptide located between aa221-270 of human SLAIN1 (Q8ND83, NP_001035243). Percent identity by BLAST analysis: Human, Chimpanzee, Gorilla, Orangutan, Gibbon, Monkey, Marmoset, Rat, Elephant, Dog, Bat, Rabbit, Horse, Pig, Guinea pig (100%), Bovine (93%), Galago, Mouse, Opossum (92%), Turkey, Zebra finch, Chicken (85%). Type of Immunogen: Synthetic peptide
Isotype:	IgG
Specificity:	Human SLAIN1
Predicted Reactivity:	Percent identity by BLAST analysis: Human, Dog, Rabbit, Horse, Guinea pig (100%) Bovine (93%) Mouse (92%) Chicken (85%).
Purification:	Immunoaffinity purified

Target Details

Target: SLAIN1

Alternative Name: SLAIN1 ([SLAIN1 Products](#))

Background: Name/Gene ID: SLAIN1

Synonyms: SLAIN1, C13orf32, SLAIN motif family, member 1

Gene ID: 122060

NCBI Accession: [NP_001035243](#)

UniProt: [Q8ND83](#)

Application Details

Application Notes: Approved: WB (0.2 - 1 µg/mL)

Usage: Western Blot: Suggested dilution at 1 µg/mL in 5 % skim milk / PBS buffer, and HRP conjugated anti-Rabbit IgG should be diluted in 1: 50,000 - 100,000 as second antibody. ELISA titer in peptide based assay: 1:312500.

Comment: Target Species of Antibody: Human

Restrictions: For Research Use only

Handling

Format: Lyophilized

Reconstitution: Distilled water

Concentration: Lot specific

Buffer: Lyophilized from PBS with 2 % sucrose

Handling Advice: Avoid repeat freeze-thaw cycles.

Storage: 4 °C, -20 °C

Storage Comment: Long term: -20°C, the use of 50% glycerol is recommended if storing aliquots in -20°C for long term use (up to 1 year)

Short term (less than 1 week): 4°C. Avoid freeze-thaw cycles.

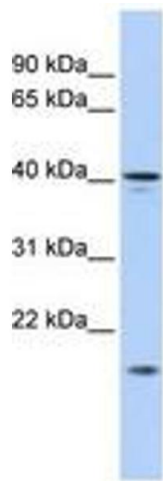


Image 1.