

Datasheet for ABIN6741182
anti-SPATA5 antibody (C-Term)



[Go to Product page](#)

1 Image

Overview

Quantity:	100 µL
Target:	SPATA5
Binding Specificity:	C-Term
Reactivity:	Human, Rat, Mouse, Pig
Host:	Rabbit
Clonality:	Polyclonal
Conjugate:	This SPATA5 antibody is un-conjugated
Application:	Western Blotting (WB)

Product Details

Immunogen:	Synthetic peptide from C-Terminus of human SPATA5 (Q8NB90, NP_660208). Percent identity by BLAST analysis: Human, Chimpanzee, Gorilla, Monkey, Galago, Mouse, Rat, Pig (100%), Marmoset, Hamster, Elephant, Rabbit, Horse, Guinea pig (92%), Gibbon (85%). Type of Immunogen: Synthetic peptide
Isotype:	IgG
Specificity:	Human SPATA5
Predicted Reactivity:	Percent identity by BLAST analysis: Mouse, Rat, Pig (100%) Rabbit, Horse, Guinea pig (92%).
Purification:	Immunoaffinity purified

Target Details

Target:	SPATA5
Alternative Name:	SPATA5 (SPATA5 Products)
Background:	Name/Gene ID: SPATA5 Synonyms: SPATA5, AFG2, ATPase family gene 2 homolog, Spermatogenesis associated 5, SPAF
Gene ID:	166378
NCBI Accession:	NP_660208
UniProt:	Q8NB90

Application Details

Application Notes:	Approved: WB (0.2 - 1 µg/mL) Usage: Western Blot: Suggested dilution at 1 µg/mL in 5 % skim milk / PBS buffer, and HRP conjugated anti-Rabbit IgG should be diluted in 1: 50,000 - 100,000 as second antibody. ELISA titer in peptide based assay: 1:62500.
Comment:	Target Species of Antibody: Human
Restrictions:	For Research Use only

Handling

Format:	Lyophilized
Reconstitution:	Distilled water
Concentration:	Lot specific
Buffer:	Lyophilized from PBS with 2 % sucrose
Handling Advice:	Avoid repeat freeze-thaw cycles.
Storage:	4 °C,-20 °C
Storage Comment:	Long term: -20°C, the use of 50% glycerol is recommended if storing aliquots in -20°C for long term use (up to 1 year) Short term (less than 1 week): 4°C. Avoid freeze-thaw cycles.

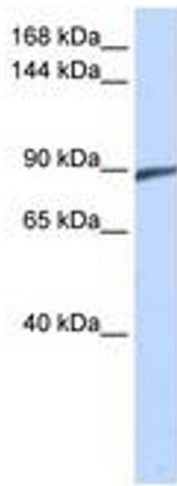


Image 1.