

Datasheet for ABIN6741193
anti-SPATA2L antibody (AA 252-301)



[Go to Product page](#)

1 Image

Overview

Quantity:	100 µL
Target:	SPATA2L
Binding Specificity:	AA 252-301
Reactivity:	Human, Dog, Rat, Monkey
Host:	Rabbit
Clonality:	Polyclonal
Conjugate:	This SPATA2L antibody is un-conjugated
Application:	Western Blotting (WB)

Product Details

Immunogen:	Synthetic peptide located between aa252-301 of human SPATA2L (Q8IUW3, NP_689552). Percent identity by BLAST analysis: Human, Gorilla, Monkey (100%), Gibbon, Galago, Guinea pig (92%), Marmoset, Dog (85%), Panda (84%), Rat (78%). Type of Immunogen: Synthetic peptide
Isotype:	IgG
Specificity:	Human SPATA2L
Predicted Reactivity:	Percent identity by BLAST analysis: Dog (85%).
Purification:	Immunoaffinity purified

Target Details

Target:	SPATA2L
Alternative Name:	SPATA2L (SPATA2L Products)
Background:	Name/Gene ID: SPATA2L Synonyms: SPATA2L, C16orf76, SPATA2-like protein, Tamo
Gene ID:	124044
NCBI Accession:	NP_689552
UniProt:	Q8IUW3

Application Details

Application Notes:	Approved: WB (0.2 - 1 µg/mL) Usage: Western Blot: Suggested dilution at 1 µg/mL in 5 % skim milk / PBS buffer, and HRP conjugated anti-Rabbit IgG should be diluted in 1: 50,000 - 100,000 as second antibody. ELISA titer in peptide based assay: 1:62500.
Comment:	Target Species of Antibody: Human
Restrictions:	For Research Use only

Handling

Format:	Lyophilized
Reconstitution:	Distilled water
Concentration:	Lot specific
Buffer:	Lyophilized from PBS with 2 % sucrose
Handling Advice:	Avoid repeat freeze-thaw cycles.
Storage:	4 °C,-20 °C
Storage Comment:	Long term: -20°C, the use of 50% glycerol is recommended if storing aliquots in -20°C for long term use (up to 1 year) Short term (less than 1 week): 4°C. Avoid freeze-thaw cycles.

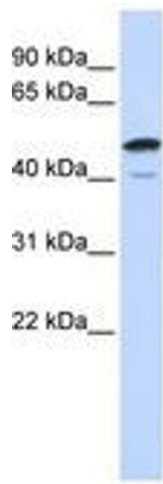


Image 1.