



[Go to Product page](#)

Datasheet for ABIN6741194  
**anti-LSM12B antibody (C-Term)**

1 Image

Overview

Quantity:	100 µL
Target:	LSM12B
Binding Specificity:	C-Term
Reactivity:	Mouse, Rat, Human, Pig, Rabbit, Cow, Dog, Horse, Bat, Monkey
Host:	Rabbit
Clonality:	Polyclonal
Conjugate:	This LSM12B antibody is un-conjugated
Application:	Western Blotting (WB)

Product Details

Immunogen:	Synthetic peptide from C-Terminus of human LSM12 (Q3MHD2, NP_689557). Percent identity by BLAST analysis: Human, Chimpanzee, Gorilla, Orangutan, Gibbon, Monkey, Galago, Marmoset, Mouse, Rat, Elephant, Panda, Dog, Bovine, Bat, Rabbit, Horse, Pig (100%), Guinea pig (92%).  Type of Immunogen: Synthetic peptide
Isotype:	IgG
Specificity:	Human LSM12
Predicted Reactivity:	Percent identity by BLAST analysis: Human, Mouse, Rat, Dog, Bovine (100%).
Purification:	Immunoaffinity purified

## Target Details

---

Target: LSM12B

Alternative Name: LSM12 ([LSM12B Products](#))

Background: Name/Gene ID: LSM12

Synonyms: LSM12, LSM12 homolog (*S. cerevisiae*), Protein LSM12 homolog, PNAS-135

Gene ID: 124801

NCBI Accession: [NP\\_689557](#)

UniProt: [Q3MHD2](#)

## Application Details

---

Application Notes: Approved: WB (0.2 - 1 µg/mL)

Usage: Western Blot: Suggested dilution at 1 µg/mL in 5 % skim milk / PBS buffer, and HRP conjugated anti-Rabbit IgG should be diluted in 1: 50,000 - 100,000 as second antibody. ELISA titer in peptide based assay: 1:62500.

Comment: Target Species of Antibody: Human

Restrictions: For Research Use only

## Handling

---

Format: Lyophilized

Reconstitution: Distilled water

Concentration: Lot specific

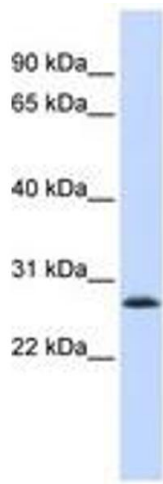
Buffer: Lyophilized from PBS with 2 % sucrose

Handling Advice: Avoid repeat freeze-thaw cycles.

Storage: 4 °C, -20 °C

Storage Comment: Long term: -20°C, the use of 50% glycerol is recommended if storing aliquots in -20°C for long term use (up to 1 year)

Short term (less than 1 week): 4°C. Avoid freeze-thaw cycles.



**Image 1.**