



[Go to Product page](#)

Datasheet for ABIN6741196
anti-C17orf57 antibody (AA 72-121)

1 Image

Overview

Quantity:	100 µL
Target:	C17orf57
Binding Specificity:	AA 72-121
Reactivity:	Human, Cow, Monkey
Host:	Rabbit
Clonality:	Polyclonal
Conjugate:	This C17orf57 antibody is un-conjugated
Application:	Western Blotting (WB)

Product Details

Immunogen:	Synthetic peptide located between aa72-121 of human EFCAB13 (Q8IY85, NP_689560). Percent identity by BLAST analysis: Human, Chimpanzee, Gorilla, Monkey (100%), Mouse, Bovine (84%). Type of Immunogen: Synthetic peptide
Isotype:	IgG
Specificity:	Human C17orf57
Predicted Reactivity:	Percent identity by BLAST analysis: Human (100%) Bovine (84%).
Purification:	Immunoaffinity purified

Target Details

Target:	C17orf57
Alternative Name:	C17orf57 (C17orf57 Products)
Background:	Name/Gene ID: EFCAB13 Synonyms: EFCAB13, C17orf57
Gene ID:	124989
NCBI Accession:	NP_689560
UniProt:	Q8IY85

Application Details

Application Notes:	Approved: WB (0.2 - 1 µg/mL) Usage: Western Blot: Suggested dilution at 1 µg/mL in 5 % skim milk / PBS buffer, and HRP conjugated anti-Rabbit IgG should be diluted in 1: 50,000 - 100,000 as second antibody. ELISA titer in peptide based assay: 1:1562500.
Comment:	Target Species of Antibody: Human
Restrictions:	For Research Use only

Handling

Format:	Lyophilized
Reconstitution:	Distilled water
Concentration:	Lot specific
Buffer:	Lyophilized from PBS with 2 % sucrose
Handling Advice:	Avoid repeat freeze-thaw cycles.
Storage:	4 °C, -20 °C
Storage Comment:	Long term: -20°C, the use of 50% glycerol is recommended if storing aliquots in -20°C for long term use (up to 1 year) Short term (less than 1 week): 4°C. Avoid freeze-thaw cycles.

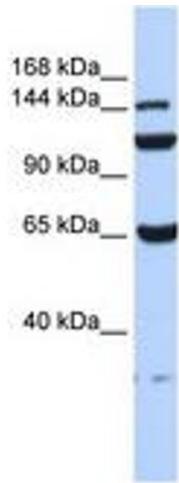


Image 1.