



[Go to Product page](#)

Datasheet for ABIN6741204
anti-VPS37A antibody (N-Term)

1 Image

Overview

Quantity:	100 µL
Target:	VPS37A
Binding Specificity:	N-Term
Reactivity:	Human, Mouse, Rat, Rabbit, Cow, Dog, Guinea Pig, Horse, Monkey, Pig
Host:	Rabbit
Clonality:	Polyclonal
Conjugate:	This VPS37A antibody is un-conjugated
Application:	Western Blotting (WB)

Product Details

Immunogen:	Synthetic peptide from N-Terminus of human VPS37A (Q8NEZ2, NP_689628). Percent identity by BLAST analysis: Human, Chimpanzee, Gorilla, Gibbon, Galago, Marmoset, Mouse, Rat, Panda, Dog, Bovine, Rabbit, Horse, Pig, Opossum, Guinea pig (100%), Chicken (92%), Xenopus (91%), Salmon, Stickleback (83%). Type of Immunogen: Synthetic peptide
Isotype:	IgG
Specificity:	Human VPS37A
Predicted Reactivity:	Percent identity by BLAST analysis: Human, Mouse, Rat, Dog, Bovine, Horse, Pig (100%) Chicken (92%) Xenopus (91%).
Purification:	Immunoaffinity purified

Target Details

Target:	VPS37A
Alternative Name:	VPS37A (VPS37A Products)
Background:	Name/Gene ID: VPS37A Synonyms: VPS37A, HCRP1, HVps37A, Vacuolar protein sorting 37A, ESCRT-I complex subunit VPS37A, PQBP2, SPG53
Gene ID:	137492
NCBI Accession:	NP_689628
UniProt:	Q8NEZ2

Application Details

Application Notes:	Approved: WB (0.2 - 1 µg/mL) Usage: Western Blot: Suggested dilution at 1 µg/mL in 5 % skim milk / PBS buffer, and HRP conjugated anti-Rabbit IgG should be diluted in 1: 50,000 - 100,000 as second antibody. ELISA titer in peptide based assay: 1:1562500.
Comment:	Target Species of Antibody: Human
Restrictions:	For Research Use only

Handling

Format:	Lyophilized
Reconstitution:	Distilled water
Concentration:	Lot specific
Buffer:	Lyophilized from PBS with 2 % sucrose
Handling Advice:	Avoid repeat freeze-thaw cycles.
Storage:	4 °C,-20 °C
Storage Comment:	Long term: -20°C, the use of 50% glycerol is recommended if storing aliquots in -20°C for long term use (up to 1 year) Short term (less than 1 week): 4°C. Avoid freeze-thaw cycles.

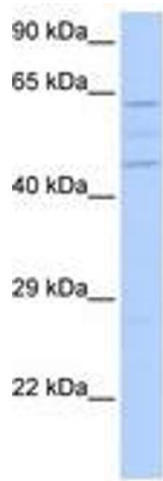


Image 1.