



[Go to Product page](#)

Datasheet for ABIN6741212  
**anti-CCNYL1 antibody (AA 71-120)**

1 Image

Overview

Quantity:	100 µL
Target:	CCNYL1
Binding Specificity:	AA 71-120
Reactivity:	Human, Mouse, Rabbit, Dog, Goat, Guinea Pig
Host:	Rabbit
Clonality:	Polyclonal
Conjugate:	This CCNYL1 antibody is un-conjugated
Application:	Western Blotting (WB)

Product Details

Immunogen:	Synthetic peptide located between aa71-120 of human CCNYL1 (Q8N7R7, NP_689736). Percent identity by BLAST analysis: Human, Chimpanzee, Gibbon, Galago, Marmoset, Mouse, Goat, Elephant, Dog, Rabbit, Guinea pig (100%), Monkey, Horse (92%).  Type of Immunogen: Synthetic peptide
Isotype:	IgG
Specificity:	Human CCNYL1
Predicted Reactivity:	Percent identity by BLAST analysis: Mouse, Dog, Rabbit, Guinea pig (100%).
Purification:	Immunoaffinity purified

## Target Details

---

Target:	CCNYL1
Alternative Name:	CCNYL1 ( <a href="#">CCNYL1 Products</a> )
Background:	Name/Gene ID: CCNYL1  Synonyms: CCNYL1, Cyclin Y-like 1, Cyclin-Y-like protein 1
Gene ID:	151195
NCBI Accession:	<a href="#">NP_689736</a>
UniProt:	<a href="#">Q8N7R7</a>

## Application Details

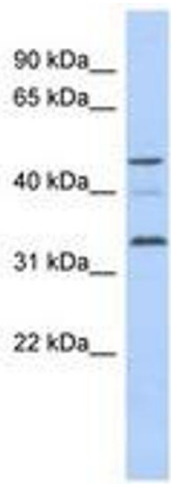
---

Application Notes:	Approved: WB (0.2 - 1 µg/mL)  Usage: Western Blot: Suggested dilution at 1 µg/mL in 5 % skim milk / PBS buffer, and HRP conjugated anti-Rabbit IgG should be diluted in 1: 50,000 - 100,000 as second antibody. ELISA titer in peptide based assay: 1:62500.
Comment:	Target Species of Antibody: Human
Restrictions:	For Research Use only

## Handling

---

Format:	Lyophilized
Reconstitution:	Distilled water
Concentration:	Lot specific
Buffer:	Lyophilized from PBS with 2 % sucrose
Handling Advice:	Avoid repeat freeze-thaw cycles.
Storage:	4 °C,-20 °C
Storage Comment:	Long term: -20°C, the use of 50% glycerol is recommended if storing aliquots in -20°C for long term use (up to 1 year)  Short term (less than 1 week): 4°C. Avoid freeze-thaw cycles.



**Image 1.**