



[Go to Product page](#)

Datasheet for ABIN6741217
anti-C1orf177 antibody (AA 251-300)

1 Image

Overview

Quantity:	100 µL
Target:	C1orf177 (C1ORF177)
Binding Specificity:	AA 251-300
Reactivity:	Human, Cow, Dog, Horse
Host:	Rabbit
Clonality:	Polyclonal
Conjugate:	This C1orf177 antibody is un-conjugated
Application:	Western Blotting (WB)

Product Details

Immunogen:	Synthetic peptide located between aa251-300 of human C1orf177 (Q3ZCV2, NP_689820). Percent identity by BLAST analysis: Human, Gibbon, Monkey (100%), Gorilla, Galago, Marmoset, Rabbit (92%), Elephant, Bovine, Horse (85%), Mouse, Rat (78%). Type of Immunogen: Synthetic peptide
Isotype:	IgG
Specificity:	Human C1orf177
Predicted Reactivity:	Percent identity by BLAST analysis: Rabbit (92%) Bovine, Horse (85%).
Purification:	Immunoaffinity purified

Target Details

Target:	C1orf177 (C1ORF177)
Alternative Name:	C1orf177 (C1ORF177 Products)
Background:	Name/Gene ID: C1orf177 Synonyms: C1orf177
Gene ID:	163747
NCBI Accession:	NP_689820
UniProt:	Q3ZCV2

Application Details

Application Notes:	Approved: WB (0.2 - 1 µg/mL) Usage: Western Blot: Suggested dilution at 1 µg/mL in 5 % skim milk / PBS buffer, and HRP conjugated anti-Rabbit IgG should be diluted in 1: 50,000 - 100,000 as second antibody. ELISA titer in peptide based assay: 1:1562500.
Comment:	Target Species of Antibody: Human
Restrictions:	For Research Use only

Handling

Format:	Lyophilized
Reconstitution:	Distilled water
Concentration:	Lot specific
Buffer:	Lyophilized from PBS with 2 % sucrose
Handling Advice:	Avoid repeat freeze-thaw cycles.
Storage:	4 °C,-20 °C
Storage Comment:	Long term: -20°C, the use of 50% glycerol is recommended if storing aliquots in -20°C for long term use (up to 1 year) Short term (less than 1 week): 4°C. Avoid freeze-thaw cycles.

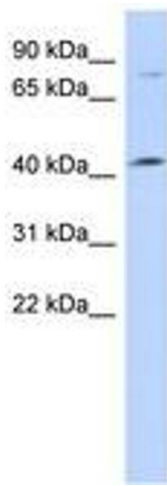


Image 1.