



[Go to Product page](#)

Datasheet for ABIN6741221

anti-FAM46D antibody (C-Term)

1 Image

Overview

Quantity:	100 µL
Target:	FAM46D
Binding Specificity:	C-Term
Reactivity:	Human, Cow, Dog, Pig
Host:	Rabbit
Clonality:	Polyclonal
Conjugate:	This FAM46D antibody is un-conjugated
Application:	Western Blotting (WB)

Product Details

Immunogen:	Synthetic peptide from C-Terminus of human FAM46D (Q8NEK8, NP_689843). Percent identity by BLAST analysis: Human, Gorilla, Panda, Dog, Bovine, Pig (100%), Marmoset (92%), Monkey (84%). Type of Immunogen: Synthetic peptide
Isotype:	IgG
Specificity:	Human FAM46D
Predicted Reactivity:	Percent identity by BLAST analysis: Human, Bovine (100%).
Purification:	Immunoaffinity purified

Target Details

Target:	FAM46D
Alternative Name:	FAM46D (FAM46D Products)
Background:	Name/Gene ID: FAM46D Synonyms: FAM46D, Cancer/testis antigen 112, CT1.26, Protein FAM46D, CT112
Gene ID:	169966
NCBI Accession:	NP_689843
UniProt:	Q8NEK8

Application Details

Application Notes:	Approved: WB (0.2 - 1 µg/mL) Usage: Western Blot: Suggested dilution at 1 µg/mL in 5 % skim milk / PBS buffer, and HRP conjugated anti-Rabbit IgG should be diluted in 1: 50,000 - 100,000 as second antibody. ELISA titer in peptide based assay: 1:62500.
Comment:	Target Species of Antibody: Human
Restrictions:	For Research Use only

Handling

Format:	Lyophilized
Reconstitution:	Distilled water
Concentration:	Lot specific
Buffer:	Lyophilized from PBS with 2 % sucrose
Handling Advice:	Avoid repeat freeze-thaw cycles.
Storage:	4 °C,-20 °C
Storage Comment:	Long term: -20°C, the use of 50% glycerol is recommended if storing aliquots in -20°C for long term use (up to 1 year) Short term (less than 1 week): 4°C. Avoid freeze-thaw cycles.

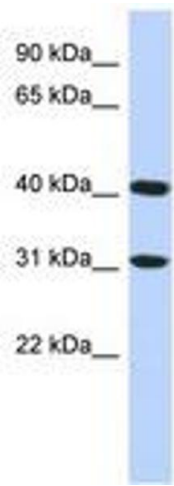


Image 1.