



[Go to Product page](#)

Datasheet for ABIN6741222

anti-FAM76A antibody (N-Term)

1 Image

Overview

Quantity:	100 µL
Target:	FAM76A
Binding Specificity:	N-Term
Reactivity:	Human, Mouse, Rat, Rabbit, Cow, Guinea Pig, Bat, Chicken, Monkey, Pig
Host:	Rabbit
Clonality:	Polyclonal
Conjugate:	This FAM76A antibody is un-conjugated
Application:	Western Blotting (WB)

Product Details

Immunogen:	Synthetic peptide from N-Terminus of human FAM76A (Q8TAV0, NP_689873). Percent identity by BLAST analysis: Human, Chimpanzee, Gorilla, Monkey, Galago, Marmoset, Mouse, Rat, Elephant, Panda, Bovine, Bat, Rabbit, Pig, Opossum, Guinea pig, Zebra finch, Chicken, Platypus (100%), Zebrafish (92%), Xenopus (85%), Dog, Horse, Lizard, Salmon, Stickleback (84%). Type of Immunogen: Synthetic peptide
Isotype:	IgG
Specificity:	Human FAM76A
Predicted Reactivity:	Percent identity by BLAST analysis: Human, Mouse, Rat, Rabbit (100%).
Purification:	Immunoaffinity purified

Target Details

Target:	FAM76A
Alternative Name:	FAM76A (FAM76A Products)
Background:	Name/Gene ID: FAM76A Synonyms: FAM76A, RP3-42616.1, Protein FAM76A
Gene ID:	199870
NCBI Accession:	NP_689873
UniProt:	Q8TAV0

Application Details

Application Notes:	Approved: WB (0.2 - 1 µg/mL) Usage: Western Blot: Suggested dilution at 1 µg/mL in 5 % skim milk / PBS buffer, and HRP conjugated anti-Rabbit IgG should be diluted in 1: 50,000 - 100,000 as second antibody. ELISA titer in peptide based assay: 1:1562500.
Comment:	Target Species of Antibody: Human
Restrictions:	For Research Use only

Handling

Format:	Lyophilized
Reconstitution:	Distilled water
Concentration:	Lot specific
Buffer:	Lyophilized from PBS with 2 % sucrose
Handling Advice:	Avoid repeat freeze-thaw cycles.
Storage:	4 °C, -20 °C
Storage Comment:	Long term: -20°C, the use of 50% glycerol is recommended if storing aliquots in -20°C for long term use (up to 1 year) Short term (less than 1 week): 4°C. Avoid freeze-thaw cycles.

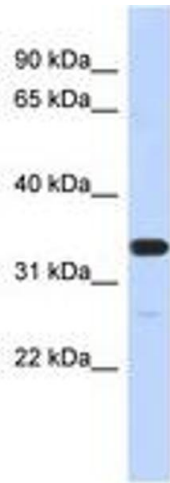


Image 1.