



[Go to Product page](#)

Datasheet for ABIN6741226  
**anti-PDIK1L antibody (AA 107-156)**

1 Image

Overview

Quantity:	100 µL
Target:	PDIK1L
Binding Specificity:	AA 107-156
Reactivity:	Human, Mouse, Rat, Rabbit, Cow, Dog, Guinea Pig, Horse, Pig, Bat, Hamster, Monkey, Chicken
Host:	Rabbit
Clonality:	Polyclonal
Conjugate:	This PDIK1L antibody is un-conjugated
Application:	Western Blotting (WB)

Product Details

Immunogen:	Synthetic peptide located between aa107-156 of human PDIK1L (Q8N165, NP_690048). Percent identity by BLAST analysis: Human, Chimpanzee, Gorilla, Orangutan, Gibbon, Monkey, Galago, Marmoset, Mouse, Rat, Hamster, Elephant, Dog, Bovine, Bat, Rabbit, Horse, Pig, Opossum, Guinea pig, Turkey, Chicken (100%), Platypus, Stickleback, Zebrafish (92%), Zebra finch (85%).  Type of Immunogen: Synthetic peptide
Isotype:	IgG
Specificity:	Human PDIK1L
Predicted Reactivity:	Percent identity by BLAST analysis: Mouse, Rat, Dog, Bovine, Rabbit, Guinea pig, Chicken (100%) Zebrafish (92%).

## Product Details

---

Purification: Immunoaffinity purified

## Target Details

---

Target: PDIK1L

Alternative Name: PDIK1L ([PDIK1L Products](#))

Background: Name/Gene ID: PDIK1L  
Subfamily: NFK  
Family: Protein Kinase

Synonyms: PDIK1L, Casein kinase, CLIK1L, Mgc27093, STK35L2

Gene ID: 149420

NCBI Accession: [NP\\_690048](#)

UniProt: [Q8N165](#)

## Application Details

---

Application Notes: Approved: WB (0.2 - 1 µg/mL)

Usage: Western Blot: Suggested dilution at 1 µg/mL in 5 % skim milk / PBS buffer, and HRP conjugated anti-Rabbit IgG should be diluted in 1: 50,000 - 100,000 as second antibody. ELISA titer in peptide based assay: 1:312500.

Comment: Target Species of Antibody: Human

Restrictions: For Research Use only

## Handling

---

Format: Lyophilized

Reconstitution: Distilled water

Concentration: Lot specific

Buffer: Lyophilized from PBS with 2 % sucrose

Handling Advice: Avoid repeat freeze-thaw cycles.

Storage: 4 °C, -20 °C

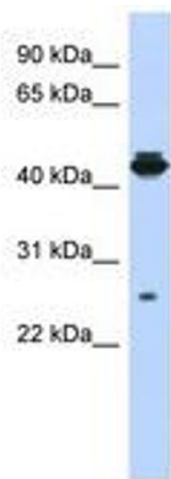
## Handling

---

Storage Comment: Long term: -20°C, the use of 50% glycerol is recommended if storing aliquots in -20°C for long term use (up to 1 year)  
Short term (less than 1 week): 4°C. Avoid freeze-thaw cycles.

## Images

---



**Image 1.**