



Datasheet for ABIN6741229  
**anti-NADK2 antibody (AA 215-264)**



[Go to Product page](#)

1 Image

Overview

Quantity:	100 µL
Target:	NADK2
Binding Specificity:	AA 215-264
Reactivity:	Human, Mouse, Rat, Cow, Dog, Rabbit, Guinea Pig, Pig, Bat, Monkey
Host:	Rabbit
Clonality:	Polyclonal
Conjugate:	This NADK2 antibody is un-conjugated
Application:	Western Blotting (WB)

Product Details

Immunogen:	Synthetic peptide located between aa215-264 of human NADK2 (Q4G0N4, NP_001078880). Percent identity by BLAST analysis: Human, Chimpanzee, Gorilla, Orangutan, Gibbon, Monkey, Galago, Marmoset, Mouse, Rat, Elephant, Dog, Bovine, Bat, Rabbit, Pig, Guinea pig (100%), Horse, Opossum, Platypus, Xenopus, Stickleback (92%), Turkey, Zebra finch, Chicken, Zebrafish (85%).  Type of Immunogen: Synthetic peptide
Isotype:	IgG
Specificity:	Human C5orf33
Predicted Reactivity:	Percent identity by BLAST analysis: Dog (100%).
Purification:	Immunoaffinity purified

## Target Details

---

Target: NADK2

Alternative Name: NADK2 / C5orf33 ([NADK2 Products](#))

Background: Name/Gene ID: NADK2

Synonyms: NADK2, C5orf33, NADKD1, NAD kinase domain containing 1

Gene ID: 133686

NCBI Accession: [NP\\_001078880](#)

UniProt: [Q4G0N4](#)

## Application Details

---

Application Notes: Approved: WB (0.2 - 1 µg/mL)

Usage: Western Blot: Suggested dilution at 1 µg/mL in 5 % skim milk / PBS buffer, and HRP conjugated anti-Rabbit IgG should be diluted in 1: 50,000 - 100,000 as second antibody. ELISA titer in peptide based assay: 1:62500.

Comment: Target Species of Antibody: Human

Restrictions: For Research Use only

## Handling

---

Format: Lyophilized

Reconstitution: Reconstitute with 50 µL sterile ddH<sub>2</sub>O.

Concentration: Lot specific

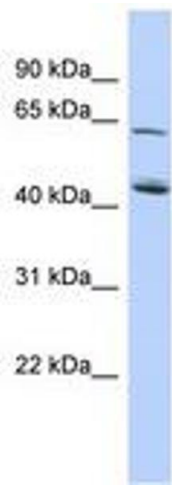
Buffer: Lyophilized from PBS with 2 % sucrose

Handling Advice: Avoid repeat freeze-thaw cycles.

Storage: 4 °C, -20 °C

Storage Comment: Long term: -20°C, the use of 50% glycerol is recommended if storing aliquots in -20°C for long term use (up to 1 year)

Short term (less than 1 week): 4°C. Avoid freeze-thaw cycles.



**Image 1.**