



[Go to Product page](#)

Datasheet for ABIN6741230

anti-TMEM74 antibody (AA 215-264)

1 Image

Overview

Quantity:	100 µL
Target:	TMEM74
Binding Specificity:	AA 215-264
Reactivity:	Human, Rabbit, Cow, Dog, Horse, Bat, Hamster, Monkey
Host:	Rabbit
Clonality:	Polyclonal
Conjugate:	This TMEM74 antibody is un-conjugated
Application:	Western Blotting (WB)

Product Details

Immunogen:	Synthetic peptide located between aa215-264 of human TMEM74 (Q96NL1, NP_694560). Percent identity by BLAST analysis: Human, Chimpanzee, Gorilla, Gibbon, Monkey, Marmoset, Hamster, Elephant, Dog, Bovine, Bat, Rabbit, Horse (100%), Galago, Mouse, Rat, Panda, Pig, Guinea pig (92%), Opossum, Turkey, Zebra finch, Chicken, Lizard, Salmon, Stickleback, Zebrafish (85%). Type of Immunogen: Synthetic peptide
Isotype:	IgG
Specificity:	Human TMEM74
Predicted Reactivity:	Percent identity by BLAST analysis: Bovine (100%) Rat (92%) Chicken (85%).
Purification:	Immunoaffinity purified

Target Details

Target:	TMEM74
Alternative Name:	TMEM74 (TMEM74 Products)
Background:	Name/Gene ID: TMEM74 Synonyms: TMEM74, Transmembrane protein 74, NET36
Gene ID:	157753
NCBI Accession:	NP_694560
UniProt:	Q96NL1

Application Details

Application Notes:	Approved: WB (0.2 - 1 µg/mL) Usage: Western Blot: Suggested dilution at 1 µg/mL in 5 % skim milk / PBS buffer, and HRP conjugated anti-Rabbit IgG should be diluted in 1: 50,000 - 100,000 as second antibody. ELISA titer in peptide based assay: 1:62500.
Comment:	Target Species of Antibody: Human
Restrictions:	For Research Use only

Handling

Format:	Lyophilized
Reconstitution:	Distilled water
Concentration:	Lot specific
Buffer:	Lyophilized from PBS with 2 % sucrose
Handling Advice:	Avoid repeat freeze-thaw cycles.
Storage:	4 °C,-20 °C
Storage Comment:	Long term: -20°C, the use of 50% glycerol is recommended if storing aliquots in -20°C for long term use (up to 1 year) Short term (less than 1 week): 4°C. Avoid freeze-thaw cycles.

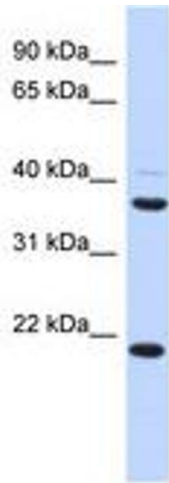


Image 1.