



[Go to Product page](#)

Datasheet for ABIN6741236

anti-NIM1 antibody (AA 143-192)

1 Image

Overview

| | |
|----------------------|---|
| Quantity: | 100 µL |
| Target: | NIM1 |
| Binding Specificity: | AA 143-192 |
| Reactivity: | Human, Mouse, Rat, Rabbit, Cow, Dog, Guinea Pig, Hamster, Monkey |
| Host: | Rabbit |
| Clonality: | Polyclonal |
| Conjugate: | This NIM1 antibody is un-conjugated |
| Application: | ELISA, Western Blotting (WB), Immunohistochemistry (IHC), Immunocytochemistry (ICC), Immunoprecipitation (IP) |

Product Details

| | |
|-----------------------|---|
| Immunogen: | Synthetic peptide located between aa143-192 of human NIM1 (Q8IY84, NP_699192). Percent identity by BLAST analysis: Human, Chimpanzee, Gorilla, Gibbon, Monkey, Marmoset, Mouse, Rat, Hamster, Elephant, Panda, Dog, Rabbit, Guinea pig (100%), Horse (92%), Bovine, Pig, Lizard, Xenopus (85%). Type of Immunogen: Synthetic peptide |
| Isotype: | IgG |
| Specificity: | Human NIM1 / MGC42105 |
| Predicted Reactivity: | Percent identity by BLAST analysis: Human, Mouse, Rat, Dog (100%) Bovine (85%). |
| Purification: | Immunoaffinity purified |

Target Details

| | |
|-------------------|--|
| Target: | NIM1 |
| Alternative Name: | NIM1K / NIM1 (NIM1 Products) |
| Background: | Name/Gene ID: NIM1K Subfamily: CAMKL Family: Protein Kinase Synonyms: NIM1K, MGC42105, NIM1 |
| Gene ID: | 167359 |
| NCBI Accession: | NP_699192 |
| UniProt: | Q8IY84 |

Application Details

| | |
|--------------------|--|
| Application Notes: | Approved: Compet, ELISA, ICC, IHC, IP, WB Usage: ELISA titer in peptide based assay: 1:312500. Not recommended for: WB |
| Comment: | Target Species of Antibody: Human |
| Restrictions: | For Research Use only |

Handling

| | |
|------------------|---|
| Format: | Lyophilized |
| Reconstitution: | Distilled water |
| Concentration: | Lot specific |
| Buffer: | Lyophilized from PBS with 2 % sucrose |
| Handling Advice: | Avoid repeat freeze-thaw cycles. |
| Storage: | 4 °C, -20 °C |
| Storage Comment: | Long term: -20°C, the use of 50% glycerol is recommended if storing aliquots in -20°C for long term use (up to 1 year) Short term (less than 1 week): 4°C. Avoid freeze-thaw cycles. |

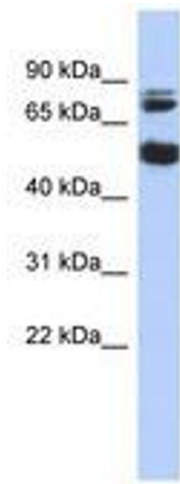


Image 1.