



[Go to Product page](#)

Datasheet for ABIN6741248
anti-DENND2C antibody (AA 359-408)

1 Image

Overview

Quantity:	100 µL
Target:	DENND2C
Binding Specificity:	AA 359-408
Reactivity:	Human, Mouse, Rat, Rabbit, Dog, Horse, Bat, Monkey
Host:	Rabbit
Clonality:	Polyclonal
Conjugate:	This DENND2C antibody is un-conjugated
Application:	Western Blotting (WB)

Product Details

Immunogen:	Synthetic peptide located between aa359-408 of human DENND2C (Q68D51, NP_940861). Percent identity by BLAST analysis: Human, Chimpanzee, Gorilla, Gibbon, Monkey, Galago, Marmoset, Mouse, Rat, Elephant, Dog, Bat, Rabbit, Horse, Opossum (100%), Bovine, Guinea pig, Platypus (92%). Type of Immunogen: Synthetic peptide
Isotype:	IgG
Specificity:	Human DENND2C
Predicted Reactivity:	Percent identity by BLAST analysis: Human, Mouse, Rat, Dog, Rabbit, Horse (100%) Bovine, Guinea pig (92%).
Purification:	Immunoaffinity purified

Target Details

Target:	DENND2C
Alternative Name:	DENND2C (DENND2C Products)
Background:	Name/Gene ID: DENND2C Synonyms: DENND2C, DENN/MADD domain containing 2C, DJ1156J9.1, RP5-1156J9.1
Gene ID:	163259
NCBI Accession:	NP_940861
UniProt:	Q68D51

Application Details

Application Notes:	Approved: WB (0.2 - 1 µg/mL) Usage: Western Blot: Suggested dilution at 1 µg/mL in 5 % skim milk / PBS buffer, and HRP conjugated anti-Rabbit IgG should be diluted in 1: 50,000 - 100,000 as second antibody. ELISA titer in peptide based assay: 1:312500.
Comment:	Target Species of Antibody: Human
Restrictions:	For Research Use only

Handling

Format:	Lyophilized
Reconstitution:	Distilled water
Concentration:	Lot specific
Buffer:	Lyophilized from PBS with 2 % sucrose
Handling Advice:	Avoid repeat freeze-thaw cycles.
Storage:	4 °C,-20 °C
Storage Comment:	Long term: -20°C, the use of 50% glycerol is recommended if storing aliquots in -20°C for long term use (up to 1 year) Short term (less than 1 week): 4°C. Avoid freeze-thaw cycles.

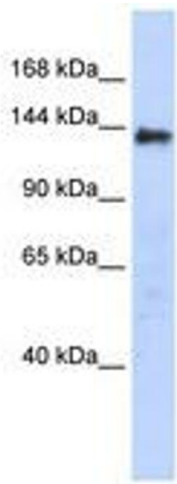


Image 1.