

Datasheet for ABIN6741255

anti-Retinoic Acid Induced 12 (RAI12) (AA 143-192) antibody[Go to Product page](#)**1** Image

Overview

Quantity:	100 µL
Target:	Retinoic Acid Induced 12 (RAI12)
Binding Specificity:	AA 143-192
Reactivity:	Human, Dog, Horse, Rabbit
Host:	Rabbit
Clonality:	Polyclonal
Conjugate:	Un-conjugated
Application:	Western Blotting (WB)

Product Details

Immunogen:	Synthetic peptide located between aa143-192 of human ELP5 (Q8TE02, NP_056177). Percent identity by BLAST analysis: Human, Chimpanzee, Monkey, Elephant, Rabbit, Horse (100%), Gorilla, Marmoset, Rat, Bovine, Bat (92%), Dog (85%), Mouse (84%). Type of Immunogen: Synthetic peptide
Isotype:	IgG
Specificity:	Human C17orf81
Predicted Reactivity:	Percent identity by BLAST analysis: Human, Rabbit, Horse (100%) Bovine (92%) Dog (85%).
Purification:	Immunoaffinity purified

Target Details

Target:	Retinoic Acid Induced 12 (RAI12)
Alternative Name:	ELP5 (RAI12 Products)
Background:	Name/Gene ID: ELP5 Synonyms: ELP5, C17orf81, DERP6, HSPC002, MST071, MSTP071, S-phase 2 protein
Gene ID:	23587
NCBI Accession:	NP_056177
UniProt:	Q8TE02

Application Details

Application Notes:	Approved: WB (0.2 - 1 µg/mL) Usage: Western Blot: Suggested dilution at 1 µg/mL in 5 % skim milk / PBS buffer, and HRP conjugated anti-Rabbit IgG should be diluted in 1: 50,000 - 100,000 as second antibody. ELISA titer in peptide based assay: 1:1562500.
Comment:	Target Species of Antibody: Human
Restrictions:	For Research Use only

Handling

Format:	Lyophilized
Reconstitution:	Distilled water
Concentration:	Lot specific
Buffer:	Lyophilized from PBS with 2 % sucrose
Handling Advice:	Avoid repeat freeze-thaw cycles.
Storage:	4 °C, -20 °C
Storage Comment:	Long term: -20°C, the use of 50% glycerol is recommended if storing aliquots in -20°C for long term use (up to 1 year) Short term (less than 1 week): 4°C. Avoid freeze-thaw cycles.

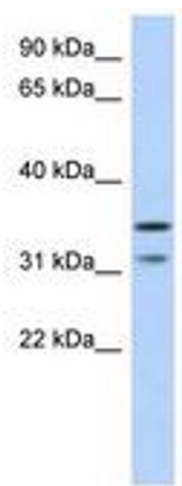


Image 1.