

Datasheet for ABIN6741256
anti-CCDC70 antibody (AA 71-120)



[Go to Product page](#)

1 Image

Overview

Quantity:	100 µL
Target:	CCDC70
Binding Specificity:	AA 71-120
Reactivity:	Human, Dog, Pig
Host:	Rabbit
Clonality:	Polyclonal
Conjugate:	This CCDC70 antibody is un-conjugated
Application:	Western Blotting (WB)

Product Details

Immunogen:	Synthetic peptide located between aa71-120 of human CCDC70 (Q6NSX1, NP_112580). Percent identity by BLAST analysis: Human, Gorilla, Gibbon, Marmoset (100%), Monkey, Mouse, Rat, Elephant, Panda (92%), Horse (91%), Hamster, Dog, Pig (85%), Bat (84%). Type of Immunogen: Synthetic peptide
Isotype:	IgG
Specificity:	Human CCDC70
Predicted Reactivity:	Percent identity by BLAST analysis: Mouse (92%) Horse (91%) Dog, Pig (85%).
Purification:	Immunoaffinity purified

Target Details

Target:	CCDC70
Alternative Name:	CCDC70 (CCDC70 Products)
Background:	Name/Gene ID: CCDC70 Synonyms: CCDC70, DKFZP434K1172
Gene ID:	83446
NCBI Accession:	NP_112580
UniProt:	Q6NSX1

Application Details

Application Notes:	Approved: WB (0.2 - 1 µg/mL) Usage: Western Blot: Suggested dilution at 1 µg/mL in 5 % skim milk / PBS buffer, and HRP conjugated anti-Rabbit IgG should be diluted in 1: 50,000 - 100,000 as second antibody. ELISA titer in peptide based assay: 1:312500.
Comment:	Target Species of Antibody: Human
Restrictions:	For Research Use only

Handling

Format:	Lyophilized
Reconstitution:	Distilled water
Concentration:	Lot specific
Buffer:	Lyophilized from PBS with 2 % sucrose
Handling Advice:	Avoid repeat freeze-thaw cycles.
Storage:	4 °C, -20 °C
Storage Comment:	Long term: -20°C, the use of 50% glycerol is recommended if storing aliquots in -20°C for long term use (up to 1 year) Short term (less than 1 week): 4°C. Avoid freeze-thaw cycles.

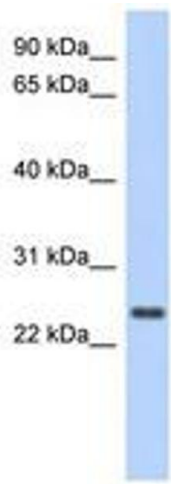


Image 1.