

## Datasheet for ABIN6741275 anti-TBC1D22A antibody (AA 108-157)



[Go to Product page](#)

### 1 Image

#### Overview

|                      |   |
|----------------------|---|
| Quantity:            | 100 µL                                  |
| Target:              | TBC1D22A                                |
| Binding Specificity: | AA 108-157                              |
| Reactivity:          | Human, Pig, Monkey                      |
| Host:                | Rabbit                                  |
| Clonality:           | Polyclonal                              |
| Conjugate:           | This TBC1D22A antibody is un-conjugated |
| Application:         | Western Blotting (WB)                   |

#### Product Details

|                       |  |
|-----------------------|--|
| Immunogen:            | Synthetic peptide located between aa108-157 of human TBC1D22A (Q8WUA7, NP_055161).<br>Percent identity by BLAST analysis: Human, Gorilla, Orangutan, Gibbon, Monkey (100%), Mouse (92%), Rat, Pig (85%).<br><br>Type of Immunogen: Synthetic peptide |
| Isotype:              | IgG  |
| Specificity:          | Human TBC1D22A   |
| Predicted Reactivity: | Percent identity by BLAST analysis: Human (100%) Mouse (92%) Pig (85%).  |
| Purification:         | Immunoaffinity purified  |

## Target Details

|                   |  |
|-------------------|--|
| Target:           | TBC1D22A   |
| Alternative Name: | TBC1D22A ( <a href="#">TBC1D22A Products</a> )   |
| Background:       | Name/Gene ID: TBC1D22A<br><br>Synonyms: TBC1D22A, C22orf4, HSC79E021, Putative GTPase activator, TBC1 domain family, member 22A, TBC1 domain family member 22A |
| Gene ID:          | 25771  |
| NCBI Accession:   | <a href="#">NP_055161</a>  |
| UniProt:          | <a href="#">Q8WUA7</a>   |

## Application Details

|                    |  |
|--------------------|--|
| Application Notes: | Approved: WB (0.2 - 1 µg/mL)<br><br>Usage: Western Blot: Suggested dilution at 1 µg/mL in 5 % skim milk / PBS buffer, and HRP conjugated anti-Rabbit IgG should be diluted in 1: 50,000 - 100,000 as second antibody. ELISA titer in peptide based assay: 1:62500. |
| Comment:           | Target Species of Antibody: Human  |
| Restrictions:      | For Research Use only  |

## Handling

|                  |   |
|------------------|---|
| Format:          | Lyophilized   |
| Reconstitution:  | Distilled water   |
| Concentration:   | Lot specific  |
| Buffer:          | Lyophilized from PBS with 2 % sucrose   |
| Handling Advice: | Avoid repeat freeze-thaw cycles.  |
| Storage:         | 4 °C,-20 °C   |
| Storage Comment: | Long term: -20°C, the use of 50% glycerol is recommended if storing aliquots in -20°C for long term use (up to 1 year)<br><br>Short term (less than 1 week): 4°C. Avoid freeze-thaw cycles. |

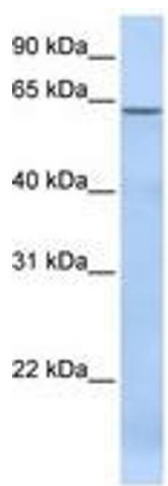


Image 1.